



WORLD'S LARGEST TOURNAMENT
FISHING ORGANIZATION
www.mlfsouthafrica.com



www.sabass.com

SA baa BAS

Issue 294



10

Tips for a 10 Pounder

BASS Hot Spots

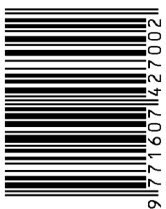
Spinnerbait Secrets



RSA: R49.50 (incl. VAT)
Other Countries:
R43.04 (Tax excl.)



25 0 1 0



9 771607 427002 1

Ten Tips For a Ten Pounder | Spinnerbait Secrets | About Jerkbait | Identify Bass Hot Spots | How to Target Bass During Spawn
For Just In Case | Why Not Learn From Me | Mysteries Of The Flat Banks | Using Electronics During The Spawn | Fun Bass Facts
Meet Calman Grobler | Hoe Om Baars Lewend Te Hou | Basics 4 Beginners | Industry News and More...

SOLID STATE LITHIUM BATTERIES

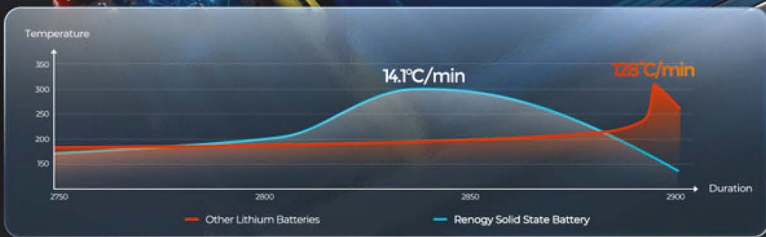


Industry-Leading Solid State Battery Cells

Redefine energy storage safety and reduce thermal runaway

70% Liquid Electrolytes Reduced

9 Times Slower Temperature Rise



Email: salessa@renogy.com



EAGLE EYE™

FISHFINDER WITH LIVE SONAR



Eagle Eye™ is the world's most accessible fish finder with live sonar. Focused forward and down live sonar combined with CHIRP & DownScan Imaging™ in one transducer, along with detailed C-MAP® charting options on a crystal clear IPS display.



COMPLETE, ALL-IN-ONE
SONAR SOLUTION
(LIVE FORWARD + LIVE DOWN +
DOWNSCAN W/FISHREVEAL™ +
CHIRP SONAR)



DESIGNED TO FISH



CONNECT & CAST



DETAILED MAPPING



LOWRANCE®

SOUTH AFRICA

T: 031 368 6649 E: sales@lowrance.co.za W: www.lowrance.co.za

SA BASS Magazine:	is published monthly (12 issues per annum) by BB Publications (Pty) Ltd (2023/818376/07)
Office Hours:	Our office hours are Monday to Friday, 08:15 to 16:15
Contact Numbers:	Office: (065) 849 3264, Alternative: (083) 306 2718
Website:	www.sabass.com
Facebook:	SA BASS Magazine
Editor:	Hannes Lindeque – hannes@sabass.com
Assistant editor:	Philip Kemp – philip@sabass.com
Advertising Manager:	Wilma Lindeque – wilma@sabass.com
Subscriptions:	Hannes Lindeque – hannes@sabass.com
Digital subscriptions:	www.magzter.com
Layout and Design:	Storm Deezigns - dee@stormdeezigns.co.za

About SA BASS magazine:

SA BASS, which is editorially and financially independent, is a monthly magazine catering exclusively for the bass angling community in Southern Africa. SA BASS is distributed country-wide to outlets, not only in South Africa, but also in Namibia, Swaziland and Botswana.

SA BASS is designed as a specialist bass fishing publication and has catered for a well-defined niche market since April 2001. It enjoys the support and endorsement of non-government organisations, but is not affiliated in any way to these bodies or to any other publishing, environmental or political interest group.

Our mission is to promote bass angling as a socially acceptable and popular outdoor recreational activity, and in addition, to encourage acceptable angling ethics. As such, SA BASS provides pertinent information on a wide range of subjects. These include providing a platform for informed debate on issues affecting the sport of bass angling, providing information on bass angling strategies and techniques, bass angling waters and opportunities, and also creating awareness of new products.

Within this editorial mix, due consideration is given to developing the sport among all the country's people (including the youth), and to the practical conservation of the country's natural resources.

Copyright is expressly reserved and nothing may be reproduced in part or whole without the permission of the publisher. All enquiries regarding editorial correspondence, manuscripts and photographs should be directed to: editor@sabass.com

The publisher and editorial staff are not responsible for researching and investigating the accuracy or copy right of the material provided for publication in SA BASS magazine. While every effort is made to ensure the accuracy of the contents of this magazine, the publisher does not accept responsibility for omissions or errors or their consequences. Readers are advised to use this information with the understanding that it is at their own risk. The views expressed in this magazine are not necessarily those of the publisher, the editor, editorial staff.

REGULARS & FORUMS

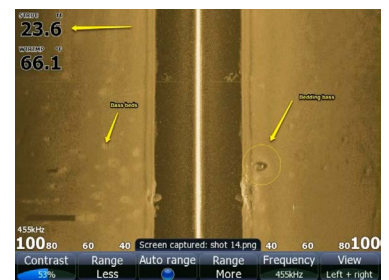
06 "About jerkbaits"

Jerkbaits are probably one of the most misunderstood baits in bass fishing.



12 "Using electronics during the spawn"

How do you catch a fish on a bed when you can't see the bed? The answer is simple; you need to know where to look and you need eyes under the water.



14 "For just in case"

There is always the temptation to buy that strange looking lure or bait because maybe tomorrow that will be the next big thing.



How to use QR-codes

1. Open the QR-code reader/scanner app on your smartphone. Most smartphones models often have an app pre-installed. If not, visit your phone's app store and download the app.
2. Keep a steady hand while the QR-code is centred on the screen.
3. As soon as it is done scanning, whatever information should present itself for your viewing pleasure.



16 **“Identify bass hotspots”**
 Big fish will hold near schools of smaller fish, but not too close as this will scatter the little ones.



18 **“Mysteries of the flat banks”**
 Bass are not food oriented in the spring; they are focused on something far more important – Roger Donaldson



20 **“Fun bass facts”**
 It is nice to read articles and develop tactics, but how is your general knowledge on bass?



22 **“Ten tips for a ten pounder”**
 When it finally happens you want to make sure you have a scale and a camera and someone to verify it was indeed over ten pounds – Gareth Rawlins



24 **“How to target bass during spawn”**
 Understanding bass behaviour during the spawn is the key to success.
 – Hannes Lindeque



26 **“Why not learn from me?”**
 Bass fishing is mostly a mental game and some of the world’s best are not always the best anglers physically, but often the strongest anglers mentally.



30 **“South Africa’s Top Competitive Bass Anglers – Calman Grobler”**
 We sit down with some of the country’s best competitive bass anglers to gain insight into their journeys, techniques, and what it takes to succeed at the highest level.



32 **“Hoe hou ons die baars lewend”**
 Heelwat basiese reëls vir die omgee van vis tydens hengelkompetisies word ongelukkig nie toegepas nie – Philip Kemp



35 **“Fishing 101: Spinnerbait secrets - Why so many options?”**
 The truth is, spinnerbaits aren’t a one-size-fits-all lure, they’re a tool built for versatility because conditions are always changing.



36 **“MK Fishing Academy”**
 Daar is ’n paar redes hoekom MK Fishing Academy ’n belangrike rol speel in ons plaaslike hengelgemeenskap.
 – Philip Kemp

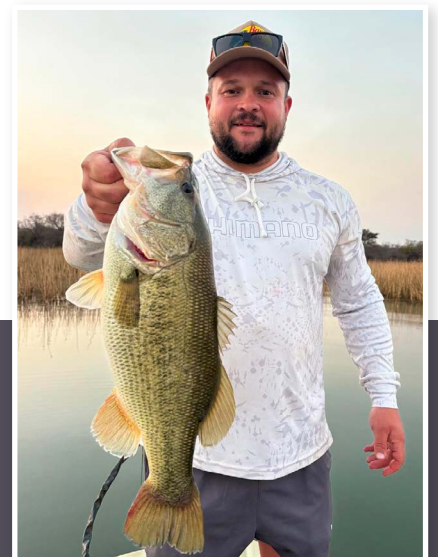


40 **“South Africa Dam Levels”**
 A list of the latest water levels of some of South Africa’s biggest water reservoirs.



COLUMNS & DEPARTMENTS

- 04 My Cast
- 10 Readers-go-Bassing
- 28 Basics for beginners
- 34 Find A Word
- 38 International Angling News



ON THE COVER

“Franco Maartens, Rhenosterkop Dam, MP”
 Image: Maurice Kemp



My Cast



Early summer is here, and with it comes that restless anticipation only bass anglers truly understand. The mornings are warmer, the banks are alive, and the bass are moving into patterns that keep us chasing after new opportunities and fresh challenges. In this issue, we bring together a collection of stories, insights, and lessons designed to sharpen your skills, fuel your passion, and remind you why bass fishing is such an endlessly fascinating pursuit.

We open with **Calman Grobler's deep dive into South Africa's top competitive bass anglers**, offering readers a rare glimpse into what it takes to rise above the rest in the tournament scene. Alongside that, our **crash course on targeting bass during the spawn** sheds light on one of the most critical times of the season, when understanding behaviour means the difference between landing a fish or going home empty-handed.

For those curious minds and restless tackle buyers, **"For just in case"** explores that universal temptation of buying the strange lure that might just be the magic ticket tomorrow. And since bass fishing is as much mental as it is physical, **"Why not learn from me?"** challenges us to think differently about what really makes an angler great.

This edition also clears up misconceptions with an in-depth look at **jerkbaits**, guides you to **bass hotspots**, and adds a bit of fun with some quirky **bass facts** to test your general knowledge. In Afrikaans, we share two important local contributions: **"Hoe hou ons die baars lewend"**, a reminder of fish care responsibilities during competitions, and an inside look at **MK Fishing Academy**, a cornerstone of our local angling community.

Spring-to-summer brings mysteries of its own, and in **"Mysteries of the flat banks"** we reveal why bass shift their focus away from food to something more primal. For the tech-savvy, **using electronics during the spawn** will help you spot beds when your eyes can't. Add to that a **spinnerbait masterclass**, ten must-know tips if you're chasing that elusive double-digit fish, and you've got an issue loaded with practical tools and inspiring reads.

As always, SA BASS is here to celebrate the sport we love, to share knowledge, and to keep the community growing stronger. Whether you're flipping a craw, throwing a jerkbait, or simply daydreaming about your next personal best, may this edition give you fresh energy and motivation for the waters ahead.

So, spawn season is here; may your lines sing with joy!

Hannes Lindeque, *Publisher*

SA baars BASS GET YOUR DIGITAL VERSION ONLY ON MAGZTER

ONLY R28pm

For your Apple, Android or Windows

Compatible with:

Google play, Kindle, Available on the App Store, VISA, DEBIT CARDS, EFT

<http://www.magzter.com/>

Contact us:

E-mail: hannes@sabass.com

BB Print, P.O. Box 24938, Gezina, 0031, Fax: 086 234 5052



Adendorff

machinery mart

NATIONAL CALL CENTRE
011 434 7000
QUALITY TOOLS & MACHINERY

PRECISION CUTS...

EVERY TIME!

MAC AFRIC LI-ION BATTERY
(2.0 AH 18V)
SBATTR002



R595
VAT INCL.

20V CORDLESS BRUSHLESS
ANGLE GRINDER
(TOOL ONLY)
SGRINC002



R1495
VAT INCL.

20V MAC AFRIC BATTERY
CHARGER
SCHARG002



R495
VAT INCL.



MAC AFRIC 115MM
SEMI-PROFESSIONAL
ANGLE GRINDER
SGRIND112



R495
VAT INCL.

MAC AFRIC 850 W
PROFESSIONAL ANGLE
GRINDER (115 MM)
SGRIND115



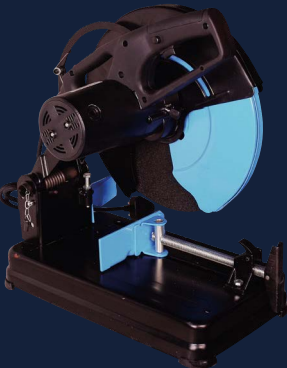
R595
VAT INCL.

MAC AFRIC 230 MM
PROFESSIONAL ANGLE
GRINDER (2200 W)
SGRIND230



R1495
VAT INCL.

MAC AFRIC 355 MM
ABRASIVE CUT OFF
MACHINE
ECUTLD001



R2495
VAT INCL.

MAC AFRIC 180 MM CUT
OFF MACHINE WITH
STEEL BLADE
ECUTLD180



R2995
VAT INCL.

MAC AFRIC 355 MM CUT
OFF MACHINE WITH
STEEL BLADE
ECUTLD002



R6995
VAT INCL.

www.adendorff.co.za

ONLINE SHOP COLLECTION OR DELIVERY

PHOTO FOR DISPLAY PURPOSES ONLY. PROCES VALID FROM 16 JUNE 2025.
MODELS MAY VARY. PUBLISHED STOCK MAY NOT BE AVAILABLE AT ALL BRANCHES AND IS
SUBJECT TO STOCK AVAILABILITY. QUANTITIES ARE LIMITED. TERMS AND CONDITIONS APPLY.

About JERKBAITS

>> I think back fondly to my childhood memories when walking the banks and fishing with my dad. In our little carry box we had these little well painted straight little Rapala's. That was before the days of getting seriously technical about fishing with boats, sonars and complicated theories.

I used to chuck these little Rapala's in the water and simply retrieve them back at a straight pace. Occasionally catching a small bass and mostly getting stuck and going for a swim to get my expensive lure. Now with a few more years' experience in bass fishing I have learned a lot more. I now know these little straight lures are one of my favourite baits and I know I missed out on a lot of fishing due to using them incorrectly for a long time - jerkbaits of course. These simple little lures that cast a mile and you retrieve in a jerk-jerk-pause motion and you get hammered by a lot of fish.

Jerkbaits and spinnerbaits are probably the two most misunderstood baits in bass fishing. The reason for this is they work so well that even if you just chuck and wind, they catch fish and thus so many anglers stop learning, experimenting and developing their skill with them.

Jerkbaits are extremely versatile and can be used in almost any fishing condition in all seasons, and it doesn't stop there. I have also caught large varieties of species on these little lures. Bass, barbel, trout, saltwater fish and believe or not, on more than one occasion the odd carp has made an appearance; yeah I'm still not sure how to explain that last one.

Jerkbaits imitate generic baitfish and that is the stable diet of most fish in any water system thus everybody is always looking for them. With correct selection and application jerkbaits can be presented year round in any type of water. One exception however is very muddy or stained water, although they have been known to work in such conditions it is not an ideal or first choice.

Let's start at the beginning. The jerkbait presentation is



so subtle that it is very important to pay attention to the smaller details. Rod and line selection is really important. A heavy line will keep the bait riding high in the water column and might hamper the action of the lure. Adding to that, a stiffer rod will also hamper the action as well, resulting in huge missed strikes as fish suddenly grab the lure and almost rip the rod from the angler's hand. We all heard the story of the one that got away.

A slow medium action rod with a lot of tip is imperative to this tactic and will secure more strikes. It also needs to be light weight and preferably about 6'6ft. Ideally this should be coupled with a matching high speed reel in order to keep up with the lure without exhausting yourself as on typical on jerkbait days, you will fish these lures for hours on end. Fluorocarbon line can be used if getting down to great depths is important or alternatively monofilament can be good especially if your rod is a bit on the stiff side. It is however extremely important that the line be as light as possible, 10 to 12lb is ideal. I even go down to 6lb in extreme conditions but note, special tackle is required for this. Lighter line will allow jerkbaits the freedom to be erratic and will not hamper the depth attributes of the specific lure.



Jerkbaits are extremely versatile and can be used in almost any fishing condition in all seasons

Lure selection

Just because lures all look the same except for colour or size does not mean they are. Just take all the jerkbaits in your box and throw them in the bath tub (yes, shamefully I have done this). You will learn a lot by this. Some float, some sink, some seem to be neutral. These neutral lures are referred to as suspending and can again be categorized in two divisions, slow sinking and slow floating. Self-explanatory but important to know the difference and if possible differentiate between these by storing them separately or by making the very slightest little markings with a permanent marker. With colour selection I prefer to keep it simple. On bright clear sky days go for translucent or silver lures and on cloudy days or more stained water, matted solid colours seems better. However always keep the selection subtle and almost like you would select a soft plastic lure.

The bill

Contrary to popular belief, it doesn't determine depth as much as it does the angle of the dive after each rod jerk. Running depth with jerkbaits is much more influenced by the combination of bait properties and retrieve speeds than it has with the bill size. A sinking lure on a slow retrieve will swim far deeper than a fast retrieve on a big billed floating bait. However the big billed bait will provide a great vertical presentation against a wall or jetties, both diving down or slowly floating up.

Bonus tip

Always make a knot that provides the bait with some freedom of movement. The famous Rapala knot that has been displayed in their packaging for many years is still my favourite choice.



All jerkbaits are not equal

How to use a jerkbait

So with tackle and lure selection covered let's look how to use this bad boy. The versatility and selection now comes alive if you know what your bait does in the water. Depending on the season, try to get the lure into your desired strike zone and then work it to draw attention. With it now being the spawn it is ideal to focus on some vertical or deeper areas close to spawning banks. Make your cast and allow the lure to sink into the desired depth. The sink or float rate of lures are always constant and if your line is not too thick to hamper this action, you should be able to fairly accurately count your lure into the desired depth zone. This allows for an amazing amount of control and an opportunity to present the lure in areas most anglers actually miss. The retrieve speed is probably one of the biggest key variables and don't get in to much of a hurry. Rather error on the slow side than the fast side. A pause between jerks can easily range from a millisecond to ten seconds or more. Nothing irritates a bass more than a jerkbait just sitting there in mid water. Between jerks, always take the rod tip towards the lure allowing line to slack. Jerk the lure the desired distance and again move the rod tip back towards the lure, ensuring it has the freedom to move on a slack line. The distance, intensity and period of the pause is very dependent on the day you are fishing but seemingly once the code is cracked it is ideal to keep to a certain pattern for a part of the day.

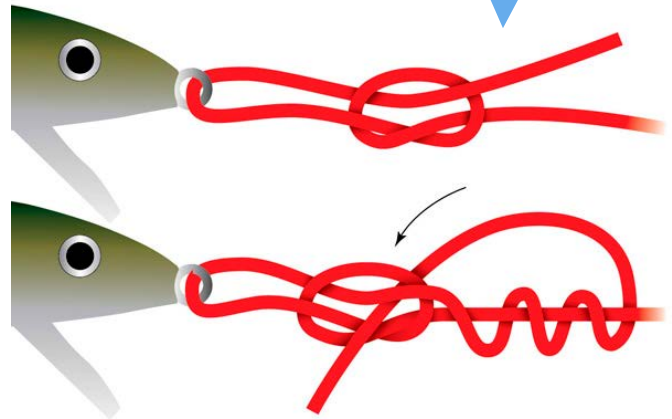
How do you know what your erratic jerk pattern is in order to duplicate it? Sing along in your head and jerk to your pattern. That really works great and if the fishing is not working, just change the song. I fish with headphones a lot time and singing along has resulted in a few funny stares from non-suspecting onlookers.

With the jerkbait being a reaction lure it is ideal to focus on windy banks and if there is a bit of wave action on the water it can only help your cause. Also as a reaction lure it is probably one of the lures that can best be used to provide a slow presentation for lethargic fish under rough conditions when fishing soft plastics will lose their effectiveness.

Although fishing jerkbaits in between trees can be very effective it is something that needs to be approached cautiously. However presenting them and getting stuck in grass can actually be very beneficial. Letting the lure drop and getting stuck in grass and then ripping is out can be an extremely effective pattern to entice bass out of their hard to reach pockets.

When conditions are tough, slowing down the presentation normally does the trick but sometime more subtlety is required and then it might be worth your while to also significantly downsize your lure. Small lures in the 4 to 5cm mark presented on ultra-light spinning tackle can be just the thing to turn a boring day into fireworks. Be observant and try to see what is in the water around you, what are the birds eating and try to notice some of the baitfish even if you have to go look for them in the shallows. If your lure is three times their size and you're not getting a bite, don't act surprised.

Use the Rapala knot when tying on a jerkbait



Soft plastics

These can be outstanding jerkbaits if applied correctly. Firstly change the knot in front of the hook to allow the hook some movement and secondly rig the plastic in such a way that the hook eyelet is exposed. This allows a lot of movement and is an excellent presentation in timbered areas or where the treble hooks prove troublesome.

These tips should give you a few different options to think about on your next fishing trip. Maybe you look at your jerkbait selection and realize there is more to it than you anticipated. You may only have a box full of floating lures and didn't even realize the shortfall of not being able to present to deep or suspending fish. If you are asking these questions or start trying to present jerkbaits in places your recently didn't, imagine then you have started the process. There is a lot to learn about these simple little lures and surely every day on the water will present new tips and tricks. 🐟

SA baars BASS  **GET YOUR DIGITAL VERSION ONLY ON MAGZTER**



ONLY R28pm

For your Apple, Android or Windows

Compatible with:

<http://www.magzter.com/>



**CLASS LEADING 150HP
NOW AVAILABLE IN COLD FUSION**



R265 000 each
Includes Basic Rigging & Aluminium Prop
Recommended Retail Incl. VAT
While Stocks Last



WhatsApp +27792310638

Mercury 150hp FourStroke

Whether you are looking to fish for pure enjoyment or the thrill of winning a competition, the Mercury 150hp Fourstrokes are smarter and lighter, providing you class leading power with generous displacement. A Mercury 150hp is a great fit for both repower and new boat packages.



T&C'S APPLY



MERCURY
GO BOLDLY.™

Rutherford

Marine

Exclusive Distributor of Mercury and MerCruiser

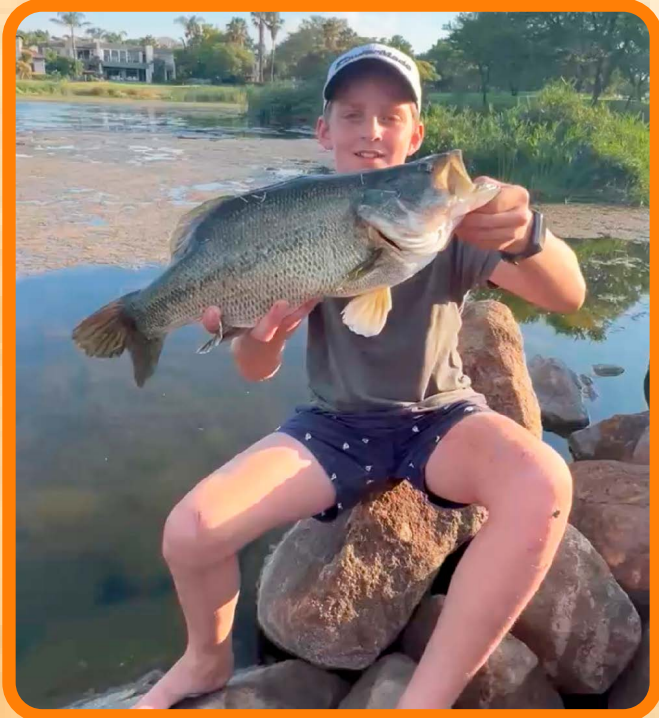
Contact your nearest Mercury Dealer for more information.

PRICE VALID WHILE STOCKS LAST

EXPLORE THE LINEUP AT RUTHERFORDMARINE.CO.ZA

READERS GO BASSING

To feature in "Readers go Bassing" send your story and pictures to editor@sabass.com
All photos published in "Readers-go-Bassing" are for the exclusive use of SA BASS Magazine. Any photos previously published by other magazines will not be considered.



PATIENCE

I saw another angler hanging around an area without landing a fish that he saw. I decided to dedicate my fishing session to catch the fish.

I was throwing a weightless McCarthy Curly Tail and the fish was not showing interest whatsoever for about 10 to 15 minutes. The beaut in the picture finally chased the lure right up to the rocks... and I missed the strike. I immediately made another cast in front of her as she swam back to the deep. Eventually I managed to catch her. What an awesome experience which I will always remember – *Enzo du Plessis*

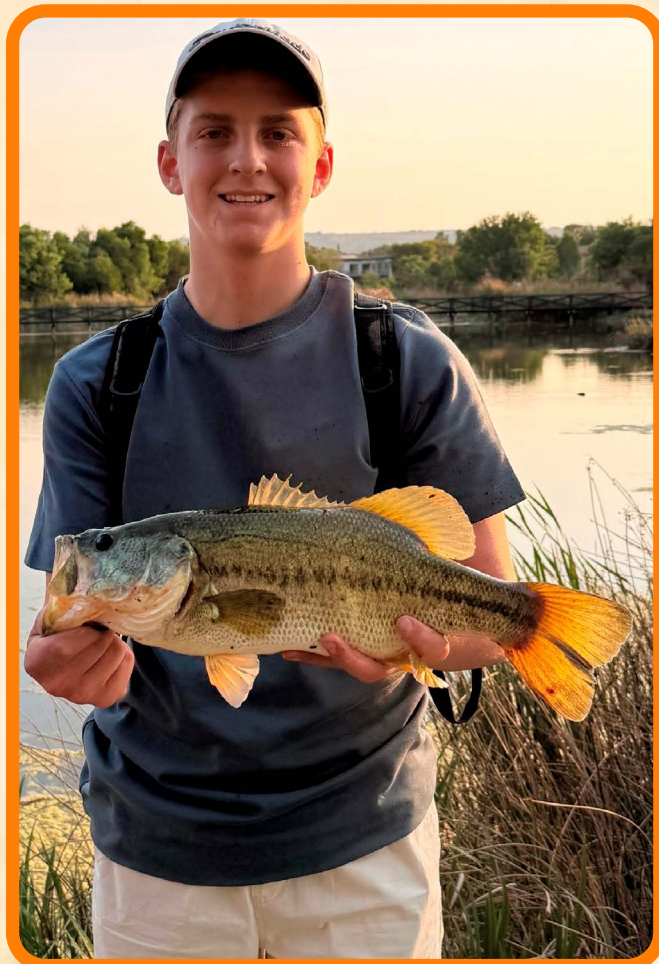
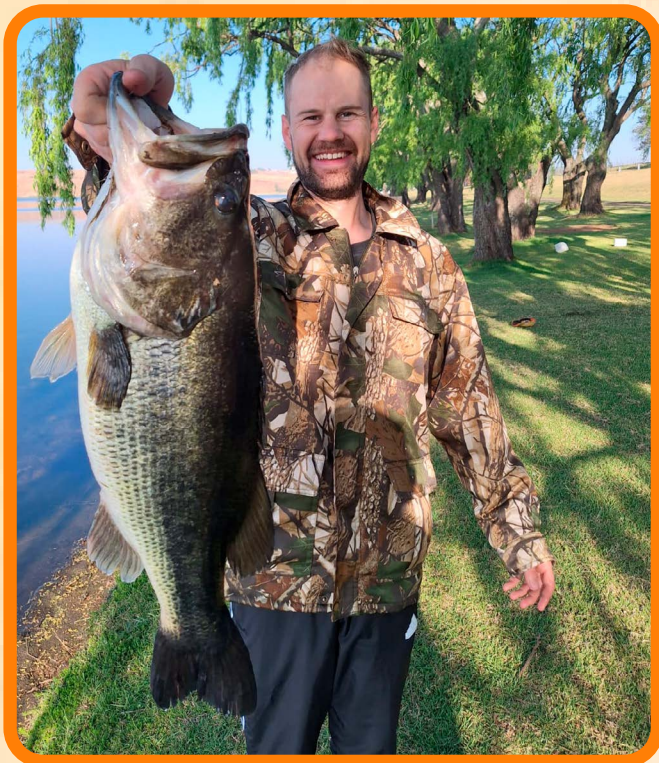
GNU VALLEY

The CDH Bass Fishing Team (Cliffe Dekker Hofmeyr) had a fantastic outing at GNU Valley in September 2025. We are especially proud of first-time fishergirl Azraa Patel, who caught her very first bass – a big moment and a great start to her fishing journey!

Congratulations also go to Marcel Bothma and Marzanne le Roux, who each landed their first bass as well.

Well done to all our anglers for a successful and memorable day on the water. Here's to many more successful casts and unforgettable fishing adventures!

– *Melissa Ramroop*



EARLY SPRING

On 21 September, during the early spring season at Silver Lakes Golf and Wildlife Estate, we enjoyed a productive day on the water despite the cloudy skies and occasional wind. The heaviest bass of the session weighed in at 2.4kg. I managed to land five fish, while my brother brought in four. Two of my bass came on the Berkley Choppo 105 Whopper Plopper, using a slow retrieve with occasional pauses - both strikes came right on the pause. The other three were caught on a Keitech Crazy Flapper Craw, which I worked past bedding bass until they committed. All fish were safely released to fight another day.
 – Enzo du Plessis

MEDEDINGEND

Ek en my pa het nog altyd een of ander kompetisie tussen ons aan die gang. Hierdie week het ek my persoonlike beste gebreek, maar die interessantste ding wat gebeur het, en wat my pa nog steeds slapelose nagte gee, is dat die vis oorspronklik “syne” was. Hy het die groot vis aan sy lyn gehad, maar toe die vis naby die kant kom het, het die lyn gebreek. Ons albei was ook gebreek!

Drie gooie later byt daardie selfde vis aan my lyn, en ek was gelukkig genoeg om hom uit te kry, met my pa se kunsas nog netjies in sy bek!

So, wat dink julle... mag hy hom ook “claim”, of is dit net my vis? – Dewald Nel

(Dit was jou gelukkige dag en jou nuwe PB, jammer vir jou pa – Red.)



Bernally's Fishing Lodge Magaliesburg

Self catering chalet & fisherman's cabin
 22 Tented & standard camp sites on water's
 edge. Ablutions & boma. Day visitors welcome.

Bookings essential. Email: bernallys@gmail.com
www.bernallys.yolasite.com
 Tel: 071 367 6990

USING ELECTRONICS DURING THE SPAWN

When I first thought about this topic, my initial reaction was I don't really need my fishfinders during the spawn. Just give me my polarized glasses and I'm all good. But then I stopped and thought about it.

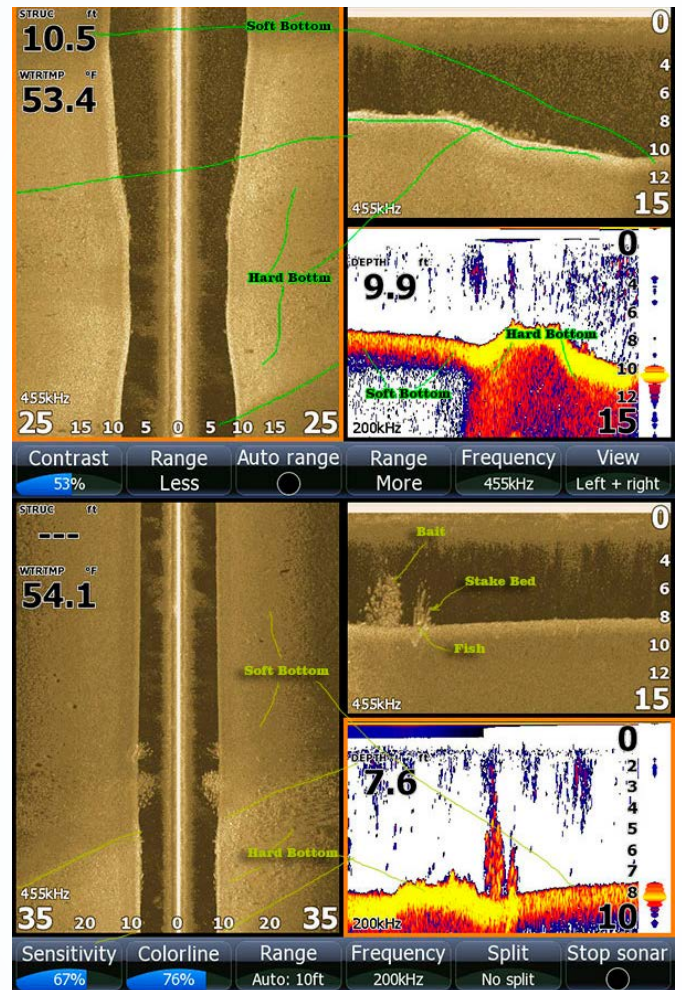
Sight fishing requires clean water and not all of our dams are clean. So how do you catch a fish on a bed when you can't see the bed? The answer is simple; you need to know where to look and you need eyes under the water.

So for the purposes of this article, I am not going to get into sight fishing and the techniques used. I want to try and share the steps I follow when approaching a dam where the fish are spawning but you can't see them because of stained water or because they are spawning deeper than what is visible with your polarized glasses.

Spawning bays are easy to see with the right map. Sheltered bays off the main channel or areas with widely spaced contour lines indicating a flat are great areas to target when trying to find spawning bass. Recently at Lake Chicamba, my partner and I found a bay up the one arm of the lake where we caught some really big fish the day before. Having never fished the lake before and coupled with the fact that Chicamba is so big; we looked to my Lowrance satellite overlay map to help us find more areas like the bay we were in. The map showed us that there was a small creek entering the back of the bay giving it some depth with shallow flat sides containing oxygen weed and brush. We surmised that the side of the dam we were on was receiving the most sunlight during the day and therefore likely to be warmer than the opposite bank and further along with the spawning cycle. We scrolled through the map and were able to quickly identify five other bays with creeks draining into them that had nice sheltered flats adjacent to this depth change. Without having pre-fished any of these spots, we were able to find spawning fish in all of them and put together a five fish limit weight of 14,8kg. Without a doubt we would not have been able to pinpoint those spawning fish without the map we had.

To summarise, the first step is to find the right areas on your map to begin your search and then once you have refined what you are looking for, having the right map available to you so you can replicate it.

Theory suggests that both large and smallmouth bass prefer a harder bottom composition to make a nest. When I say hard bottom I mean something like pea gravel and not mud or silt. Generally a gravel bottom is favoured over a sandy one. Obviously they will adapt to the conditions they have in the dam, but if you are able to identify areas that have a harder bottom you will increase your odds of



Screen captures from a Lowrance HDS showing how bottom composition and hardness is displayed on the unit

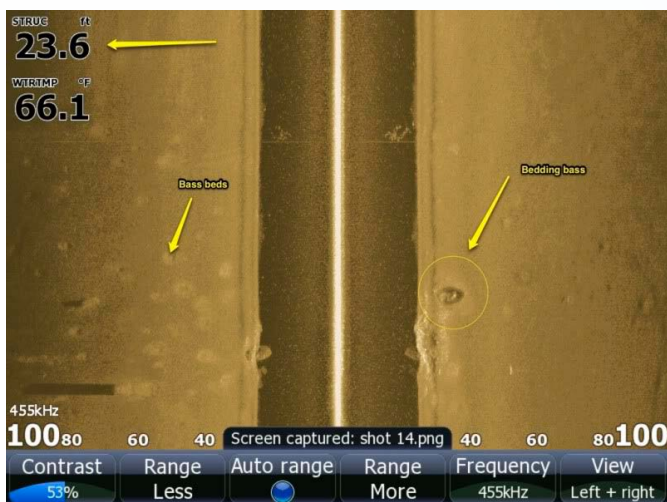
success. So the second step is to locate areas where bottom composition facilitates spawning.

How do you find areas of hard bottom with your electronics? It's actually quite easy and once you know what to look for it's obvious. The standard Lowrance pallet will use yellow, reds and blues to show bottom hardness. Yellow bands indicate hard bottom and reds and blues indicate softer bottoms. A thicker yellow band will indicate a much denser harder area than a narrower band. When using Lowrance structure scan to supplement the standard sonar readings, areas of hardness will show up as white bands as they reflect the sonar signal better than softer areas. The second step is to locate areas where bottom composition facilitates spawning.

Lowrance makes it possible to actually see fish nests under the water. Normally you will see clusters of many nests together and one must not be fooled into thinking these are bass nests. Bass nests will be spread out and not congregated so close to one another. Bluegill and bream make nest clusters and these are easier to see because the area they occupy is larger and stands out more. What I like to do in an area I suspect holds spawning fish but I can't see them is turn on my side imaging and idle parallel with the bank in fairly deep water so as to not drive right over the nest. Most of the time nests will be in water of 6ft or less. When I see the nests off to the side of the boat I will make a waypoint and keep idling along until I've reached the end of the bank. Hopefully I'll have more than one

nest to go back and fish. Sometimes I have found that if a possible spawning area contains stumps, the fish will create their beds at the base of the stumps, so if you are not seeing nests, look out for structure that could be used to spawn on. With the waypoint saved I know exactly where it is and I can back off and fish the nest from a safe distance so as to not spook the fish.

The next and final step is to catch the fish with the techniques you know that apply to the conditions. Just because you are not sight fishing them off the nest, doesn't mean the spawn is any less significant. The fish are still extremely vulnerable to being caught and it's massively important to ensure the fish are returned so that they can finish the spawning process. 🐟



This Lowrance screenshot shows how bass nests are not found in such tight clusters as compared to bream nests, but they are very visible and in this image one can actually see a fish on its nest



Most bass will spawn in water of 6ft or less

We specialize in over-landing, rooftop tent life, off-road camping and accessories

BushCo *Overland*

South Africa

www.bushcosa.co.za

info@bushcosa.co.za



012-682-0082
061-124-6258



POPULAR PRODUCTS

- Awnings
- Roof Top Tents
- Drawers, Slides & Storage Solutions
- Roof Racks & Load Bars
- Accessories & Add-ons
- Bracketry



CLUB MARINE
INSURANCE SPECIALISTS

CMI is an Authorised Financial Services Provider (FSP4430)

Since 1985 we've insured Bass boats, motors, trolling motors, electronics, fishing tackle and more. And we cover all Short-Term requirements.

Ask about our "I Forgot" cover!

GET A COMPARATIVE QUOTE TODAY!

CALL
0861 819 219

WHATSAPP
082 568 9344

FOLLOW US ON SOCIAL MEDIA

@ClubMarineInsurance

@clubmarinesa

www.clubmarinesa.com

EST.
1985



FOR JUST IN CASE

As an avid bass angler I have spent many happy hours out on the water in pursuit of and hunting those elusive olive and gold members of the deep. This pastime somehow just gets better and more fun with every outing and as with all aspects of angling there is always something new to try. Some new innovation, some new lure or technique.



Nice to have

Let's face it, most bass have seen it all... lipless cranks, spinnerbaits, buzzbaits, soft plastics, swim baits, surface lures, shallow divers and deep runners. All in different colours, shapes and sizes and in many cases in different flavours too. With this being said, it becomes rather tricky to select and decide what to take and what to leave behind when heading out to your favourite fishing hole. It's not surprising then to see some anglers out on the water with so many different baits, rods, colours, flavours and sizes that you won't be blamed for thinking that they either robbed a tackle store or that they operate an "On Board Tackle Shop".

There is always that thought in the back of the mind that maybe today will be the day that the fish will attack that ugly bait at the bottom of the locker that you bought at a clearance sale some years ago. And what about the right shape and colour? What if them fishies only want something with garlic or coffee or aniseed in pink with a blue flake or how about that purple with a white flake monster? Confusing isn't it? And what if today is spinnerbait day and last week the fluke in trusty Watermelon Green was the choice of the week?

Now we begin to get a clear picture of what's at play, that bass have moods too and that we try to outguess and outsmart these finned things that supposedly have a three second memory. How many rods? How many lures? What colours? What flavours? Who knows as it's not an exact science either and for most anglers they will stock up on popular lures in popular colours because these lures have proven themselves over years of testing and fishing. As bass

addicts, we all struggle to resist the temptation of popping into the nearest tackle shop for a quick chat and to see what's new and what would give us the edge to make that new PB possible.

Bass addicts spend large volumes of hard earned money on their sport and will continue to do so as long as there is a new record or PB out there. Now, imagine this.....

Soothing music as you walk through the air-conditioned entrance, smiles greet you from other customers and from the staff. Fresh muffins await your attention together with a nice cup of coffee. Large screen TV's show the latest in innovation and fishing technology, rods in all lengths await your touch, lures of every shape, colour and size shout your name from the shelves and here, discount is not a swear word or a curse. It seems that the whole world is smiling and there is even a casting tank where you can test the different actions of those hot new lures advertised in the magazine. And more importantly, the price is always right. Is this Utopia, or fishing heaven? Does such a place exist?

It does not matter if you're waiting for Utopia to come to your neighbourhood or whether you continue visiting the shop down the road. There is always the temptation to buy that strange looking lure or bait because maybe tomorrow that will be the next big thing for the ones you are targeting. So you as an addict you will continue buying and spending money. For a bass addict, there will never be enough baits, rods or lures... it's always a matter of... "for just in case".

In the meantime we hold our breath for the next big thing, for Utopia or fishing heaven with our wallets ready... because we are addicts and we need to feed our addiction. 🐟



EAGLE EYE™

FISHFINDER WITH LIVE SONAR



Eagle Eye™ is the world's most accessible fish finder with live sonar. Focused forward and down live sonar combined with CHIRP & DownScan Imaging™ in one transducer, along with detailed C-MAP® charting options on a crystal clear IPS display.



COMPLETE, ALL-IN-ONE
SONAR SOLUTION
(LIVE FORWARD + LIVE DOWN +
DOWNSCAN W/FISHREVEAL™ +
CHIRP SONAR)



DESIGNED TO FISH



CONNECT & CAST



DETAILED MAPPING



LOWRANCE®

SOUTH AFRICA

T: 031 368 6649 E: sales@lowrance.co.za W: www.lowrance.co.za

IDENTIFY BASS HOTSPOTS

It is important to remember that big fish often hold near schools of smaller ones, though never too close, as their presence will scatter the baitfish



Throwing lipless cranks this time of the year produces good results



Lionel Crow with a healthy 4.1kg KZN bass

If you are fishing and catching plenty of small ones only for the action to suddenly stop, don't pack up just yet. One of two things usually happens in these moments: either the school has moved on, or a large predator has slipped into the same area, making the little ones nervous. Many anglers can tell stories of hooking a small fish, only for a giant to smash into it mid-fight, turning a light-hearted catch into a battle that leaves you shaking. Sometimes the big one is landed, sometimes the line breaks, but either way the memory lasts.

Two seasons ago, while fishing at Rhenosterkop, I had exactly such an encounter. I was catching fish in the 600g class, enjoying every cast, when the bite suddenly went dead. After a few more casts I aimed closer to a nearby weedbed and hooked into a fish of about a kilo. As I worked it in, the bass swam towards another weedbed a few metres away. Out of nowhere, a massive shadow rose from the depths and, in one gulp, swallowed my fish whole. Now, when the fish in question weighs a kilogram, you can only imagine the size of the predator capable of inhaling it like a snack.

For a moment I thought I might land the giant, but after a short tussle my battered bass popped back out, missing most of its scales. The damage was so severe that the fish could not be released. Even the digestive juices of the big bass had begun to work. That encounter left me shaking and muttering under my breath for nearly an hour. Ever since, I never fish Rhenosterkop without casting into that exact spot, hoping for another chance at that hog. The area itself is intriguing: a rocky outcrop dropping in steps into deeper water, flanked by weedbeds. Perfect ambush territory.

More recently, my wife and I fished the middle dam and pushed right up into the inlet. At the very



top, where the water was shallow, we quickly caught a few fish with anchor set in the main inflow. Then we drifted about ten metres out and suddenly the average size of the fish improved. Working the slightly deeper edge of water lilies produced incredible results, showing again that bass often sit hidden just off the shallows, waiting to dart out and strike unsuspecting prey.

From a scientific standpoint, bass have a preference for man-made structure. Steel or concrete pipes, submerged buildings, or old jetties are magnets for them. On this trip, less than a metre from shore, I found about a metre of water depth and quickly caught fish around 400g. Then, as so often happens, the action died. I cast a little further into a narrow channel, about 1.5 metres deep. One twitch, another twitch, and bang, the rod bent double. This time it was a beautiful 1.3kg fish.

When it comes to tackle, my go-to rods for plastics is a short, flexible finesse rod and lipless crankbaits which also produce excellent results this time of year. The key is to vary your retrieve depth. Cast, count slowly to three, then begin your retrieve. On the next cast, count to five before retrieving, and so on, until you discover the level at which the fish are feeding. Too often anglers ignore open water because they assume there is no cover, but a single hidden rock or even an old tyre can hold a surprising number of fish. A medium-action rod is ideal for probing these overlooked areas near weedbeds or channels.



Square billed cranks can swim in a way that they will virtually never snag up

Spinnerbaits are another strong producer now. Strikes usually fall into one of two categories: the feeding bite or the aggressive “I’m going to kill you” bite. Effective colour combinations include green and olive, chartreuse and white, black and red, and red and white. Keep your colours as close to natural forage as possible, and the same principle applies to crankbaits. Square-billed cranks are especially useful because, when fished correctly, they rarely snag. Still, always keep a lure knocker handy, losing a favourite crankbait is never part of the plan.

For explosive topwater action, SPRO frogs are tough to beat, especially around lily pads or heavy structure. Cast, twitch twice, pause, and retrieve. Strikes usually come tight to cover, so when the explosion happens, wait a heartbeat before setting the hook, otherwise you risk missing your personal best. Once the hook is set, apply maximum pressure to keep the fish from burying you in cover.

Classic lures also deserve their place. The old Mepps inline spinners, for example, remain deadly. The unofficial record bass from Rhenosterkop, a giant of 7.46kg, was caught by a kurper angler right off the slipway using a Mepps Black Fury #2. I always carry a few of these veterans in my box.

At the end of the day, the most important thing is simply to get out there and fish. Spring is a prime time of year for a true personal best. 🐟



Armand Heine with a 5,81kg bass caught on a crankbait

MYSTERIES

OF THE FLAT BANKS

>> *Roger Donaldson*

It was a concept that didn't make sense to me... bass relate to structure and if you can't find the structure you won't find the bass. However, this can be completely the opposite in the spring time.

I feel like I'm going to divulge some hidden secrets of the sport of bass fishing, but it is time that someone said it. Throughout the year it is essential that bass anglers place emphasis on the fact that structure plays an integral part in sourcing our quarry. Bass enjoy the safety of structure such as trees, rock piles, man-made structures (jetty's, boat houses, bridge pilons), and cover such as overhanging trees, water vegetation and the like. Although safety/protection is a key reason for bass choosing to locate to these areas they also attract prey in the form of crustaceans and fish which are the bass' main source of food. Interestingly though, bass are not food oriented in the spring. They are focused on something far more important – the survival of their species and for this they will change the playing field entirely.

When I pick up my monthly bass fishing magazine, reading first hand examples always excited me the most. I want to know that the author has truly experienced the topic and that it is not a one-off out of the ordinary phenomenon. So I've prepared a few of my experiences and a recent example from a fellow angler in KwaZulu-Natal who was willing to provide his confirmation of the subject.

I was fishing a tournament in early spring. Winter's spell had recently been broken and we were blessed with sunny skies and a gently developing westerly. As the Rhenosterkop Dam water temperature was still reasonably frigid and the levels had recently dropped it was our objective to favour the offshore structures and steeper banks.

The morning was off to an active start and fishing in amongst other boats in our chosen areas was producing average sized male fish. It was promptly evident that the larger fish were not in the areas we were targeting. Listening to our senses my fishing partner and I made a dramatic adjustment to our strategy and moved to the flattest bank we could find. Beset only with the occasional sprig of vegetation we set about fan-casting a lipless crankbait to cover water and source a bite.

I have not seen bigger fish landed on this particular dam than that what we began to catch. Unfortunately these larger fish came with a new kind of cunning and we watched two of the bigger bass hurdle the water surface and deliver our crankbaits with particular dexterity. We doubled our bag weight of fish in thirty minutes. Was this a freak occurrence?

Travelling to another spring adventure many years ago, this time to Nandoni Dam, I remember fantasising of the flooded forest that awaited me and how every tree would produce the thumping bites that Nandoni is renowned for. On arrival I noticed that the anglers were methodically making their way around all the visible trees like little Pac-men. Duly, we joined in gleefully.

It wasn't entirely the wrong idea as we certainly found fish around the flooded timber, but there were no fireworks, no cracking rod benders. Again, we decided to break boundaries and head for the flat banks.

On arriving at the barren looking area we rigged quickly with crankbaits and Carolina rigs and began the search process. The first fish weighed 3,8kg and was caught on a DD22 crankbait. The second fish weighed 3,1kg and was caught using a light Carolina rigged Gary Yamamoto Stretch 40. We were elated. Was this another freak occurrence on a flat 'structure-less' bank?

At Goedertrouw Dam near Eshowe, KwaZulu-Natal spring arrives earlier than other dams around the country due to the warmer climate on our KZN North coast. I was fortunate enough to catch up with fellow angler, Armand Heine who spent the weekend on this unique patch of water in the first week of August. Armand was happy to share the secrets of his story, which sanctified him with a very large fish...

When we visited Goedertrouw Dam the dam's level was very low so we knew that it would be hard to catch an abundance of good sized fish.

On the first day I didn't even hook a single bass and felt quite miserable. The second day arrived and I fished for seven hours before managing to hook my first bass for the trip. Although it only weighed in just over 400 gram it gave me a well needed confidence boost.

About an hour after my first catch a big storm rolled in over the mountains of Goedertrouw Dam from the sea. My fishing partner and I knew that just before bad weather the big bass feed because of the drop in barometrical pressure. My fishing buddy on the boat suggested that I rig up with a natural colour crankbait to get the reaction bite.

On my third cast I hooked into what I believed was a snag. I gave it a few tugs in the hope that the crankbait would free itself, but on the third tug I felt the line go tight. I quickly had to free-spool the fish because my drag was tightened all the way. The fish came up twice to shake its head but luckily the hooks stayed in its mouth.

With my partner controlling the sneaker motor in the intense wind and with the net in hand to net the beast, we worked as a team to land the fish. We eventually boated the large bass in an uproar of joy and congratulations! We were all amazed when the fish weighed a whopping 5.81kg!

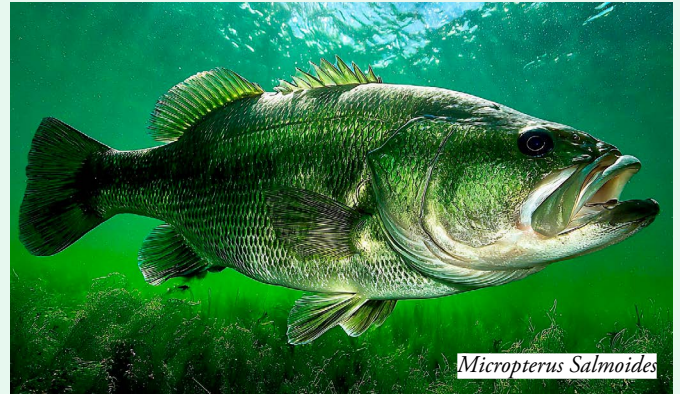
After a few pictures the fish was quickly returned to the water and she swam away energetically and fully recovered after the fight. Farewell to this beautiful fish and hopefully another day we'll meet again on that flat bank. 🐟



The famous DD22 crankbait

Fun BASS FACTS

It is nice to read articles and develop tactics, but how is your general knowledge on bass? Do you know what species you are looking for? Can you throw some numbers around? Here are a few general knowledge facts about our favorite fish that will educate or at least entertain you.



1. Largemouth bass are called *Micropterus Salmoides*. Now there is a name that should impress your friends.
2. The females are normally bigger than the males.
3. When bass spawn the male bumps into the female's side to release the eggs. To a novice it might seem that the two fish are fighting.
4. The bigger the fish, the earlier they will spawn. No one is really sure why this is the case, might be strongest going first or just a character trait that makes for the survival of the species. Regardless, you are more likely to land bigger fish earlier in the season.
5. Females can lay 2,000 to 7,000 eggs per pound (454 gram) of the female's weight.
6. 5% of the first year's spawn will make it to yearling size, 10 or 12 inches roughly. About another 5% of those will make it to adulthood. That's only 5 fish per 2000 before taking angler intervention into account.
7. Once the eggs have been laid the male guards the eggs and fans the nest to circulate fresh water over the nest. This occurs long after spawning has completed as the female moves on and deposits eggs in multiple nests.
8. Bass can function in a wide range of water temperatures. While bass have their preferred temperatures of 82 to 84°F (28 - 29°C) and will therefore move from the depths to the shallows and back again depending on the time of year. However, bass function quite well from 39 to 90°F (4 - 32°C).
9. Bass can learn from mistakes. They are intelligent creatures and if you catch a bass on a specific lure, combination or technique he might never strike that again and will in fact avoid it in the future.
10. They have a sixth sense. No they don't see dead people. Despite the senses of sight, smell, taste, feel and hearing they have a lateral line. Think of this as a sonar or location device and allows fish to key in on the slightest vibration even in the absence of any information coming in from any of the other senses. The line spans the side of the fish's body and allows it to follow ultra-low frequencies and vibrations with precise detail.
11. There are two strains of largemouth bass. The northern strains and Florida strain, the Florida strain grows faster and gets bigger.
12. Bass cannot adjust their eyes to sunlight. Their irises are fixed which they have no method of blocking light before it reaches the retina. The amount of light reaching the photoreceptor cells are regulated by dark pigment surrounding the receptors.
13. A bass' average lifespan is about 16 years, but some have been known to live more than 20 years.
14. Bass can have a burst of swimming speed of up to 19-20 kilometers per hour.
15. The IGFA All-Tackle World Record is currently tied between George W. Perry's 22 pound, 4 ounce bass caught in 1932 and Manabu Kurita's 22 pound, 5 ounce bass caught in Japan in 2009.
16. Largemouth bass can sense 1-200th of a drop of a substance in about 100 gallons of water.
17. Peak spawning occurs when water temperature is 64 to 68 degrees Fahrenheit. Keep in mind that the water temperature that sends the bass to the beds is the temperature where the pre-spawn bass hang out, not the temperature in a shallow, dark-bottom spawning pocket.



TEN TIPS FOR A TEN POUNDER

>> Gareth Rawlins

I started fishing for bass in March 2012 and bought half a bass boat with a mate, and from then on my weekends changed in a huge way. I went from chasing a little ball around a golf course to chasing a big green fish around a dam. I am very competitive and have a lot of similar minded friends, so I was always going to have an entertaining ride with them as I learned how to catch bass. Their skill levels ranged from beginners who had never even caught a fish all the way to national representatives with years of experience. With their assistance I can offer you my ten top tips for moving away from civilian status to becoming a bass catching guru, and these tips also usefully apply to catching the top prize in fishing, a ten pound bass.

Join a tournament trail

There are several reasons for joining a tournament trail. Firstly you will be spending time with like minded people, who just happen to be as crazy as you are about catching a bass. These guys will become your best mates, your toughest competitors, and your mentors on the path to the bassing holy grail. Also they are the only people you will find who actually want to get up at 03:00 in the morning to drive hours to a small dam that you found on Google Earth and hope still has water in it because those anthills look amazing!

Fish in areas where there are big fish

I am fortunate, at least on the fishing front, to live in Africa. Our moderate climate and mostly well stocked

dams all over the country are perfect for large bass to develop. Within a hundred kilometres of home I can find dams to fish. All of these have Florida largemouth in them, and all of them have produced big fish in the past. If you live in an area such as the Eastern Cape where the climate restricts the size fish can grow to, then you need to start making friends up north.

Movements

Bass love to retain their energy levels in winter because let's face it being cold-blooded during a lengthy cold spell makes moving around a drag. The muscles and tissue are slow to respohe calories to blow up big time on an unsuspected, large, slow-moving target.

Throw big baits

One of the oldest lines you will hear in bass fishing is "big fish eat big baits." This is very true. Skilled anglers do catch big fish on very small baits, but most big fish have big mouths and big appetites. You might not get as many bites throwing big baits, but the ones you do will usually pull your drag and put a smile on your face.

Lose big fish

This might sound odd, but you have to make the mistakes the first time you get a huge bass on the line. When your reel starts peeling drag and you get a glimpse of that giant body under the water, your heart starts to race, adrenaline pumps, and all those clever things you read in the bass

magazines and saw on YouTube evaporate out your head. The best lessons in life are the ones that hurt, and there is not much that hurts more than losing your P.B. in front of your mate, who will then remind you of that until you finally catch a bigger fish than him. This feeling can also go away if you watch him drop a big fish in your presence, so make sure to remind him of it often.

Fish with better fishermen than you

I used to be that guy who got overwinds that a fish eagle could nest in. Actually I am still able to do that, but it has got a bit less frequent, sadly for the fish eagles. I have fished with many very good fishermen in the last few years, but I am lucky enough to spend time on the water with other great anglers, who have shared techniques, baits, and advice, some which led to me catching my first ten pound fish.

Most competitive fishermen tend to not share their hard earned knowledge, but if you are lucky you will find the guys out there who will explain the difference between Junebug and Green Pumpkin, teach you the right knot for braided line, and show you the best way to unravel an over wind, because we have all been there.

Fish during the spawn

The spawning season is when female bass are at their biggest as they carry a stomach full of eggs that they are waiting to drop. A nine pound female any other time of the year will easily be ten pounds plus during the spawn, so you are maximizing your chances of catching a big gun during the warming months after winter. Just remember to put her back on the nest once you catch her, as she is holding all our future fishing happiness in her belly.

Use the right tackle

Use what you are comfortable with, spinning or baitcast reels, but know how they feel under heavy tension, how smooth your drag is and how much pressure you can put on that fish. A haunting memory for my most competitive partner was seeing a giant fish that was easily twelve pounds turn over on the surface then dive down into the weeds below the boat to never come out. He was going to swim down in ten feet of water in mid winter to try and dig her out before his line snapped and it was all over. If you are thinking to yourself your line is not strong enough to get a big fish, watch how quickly you will get dealt a big fish to prove you were right!

Be confident

By this I don't mean be arrogant. There are too many of those fishing for you to join the club also! I mean be confident in your bait of choice. If you like a frog, then learn how to throw the socks off it, all the techniques, get the right line, hooks and rod, so that when you do get to the right place you will know how to attack the target, and more importantly, when you get a bite, you set the



The author with a 10.6 pound fish caught on frog on a small farm dam

hook and keep the fish on. I know guys who only like to pitch, others who live and die on a fluke, and even those who have giant wrists and throw a spinnerbait all day. They love those baits, have had success with them, which makes them use them more, which breeds more success.

Retie your baits

Every time you catch a fish feel your line above the knot. Especially if you have been fishing in structure such as bull rushes and trees. Any little nick in your line is a weakness that you might not hurt you on a fourteen inch fish, but when that nick is put under the stress of a giant fish steaming away, it can snap in a heartbeat. Just because you are using fifty pound braid don't think it can't break. I have been there and waved goodbye to too many big guys to not be an expert on this problem. Retying also saves you spending all your spare cash on replacing one ounce tungsten weights when they snap off.

Be lucky

I have been known to be lucky but some people just take it to the extreme. On a social fish at a small dam, my mate's brother, who much prefers tiger and bream fishing, caught a thirteen pound bass on a spinnerbait right under the boat while drinking a beer and smoking a cigarette. If that makes you feel ill you can imagine what it did for me fishing against him on the day. Dumb luck is a good thing if you have it in your bag, but this is probably not the most consistent way to join the big guy club.

So that's how to catch a fish worthy of the front cover page of SA BASS magazine. When it finally happens you want to make sure you have a scale and a camera and someone to verify it was indeed over ten pounds, because no one will believe you otherwise. We are all naturally sceptical about other anglers' success stories.

Most importantly, hold a big fish with two hands, one in the mouth, one under the belly, and put it back in the water as soon as you have taken your photos, because I will figure out from the picture exactly where you caught it and will be back next weekend to try and do the same! 🐟

CRASH COURSE IN BASS FISHING: HOW TO TARGET BASS DURING SPAWN

Spring brings one of the most exciting times in bass fishing, namely spawn. As the water warms and daylight increases, bass move shallow to create nests and protect their future offspring.

> *Hannes Lindeque*

For anglers, this season offers a unique chance to catch fish that are more visible, predictable, and often at their heaviest of the year. Understanding bass behaviour during the spawn is the key to success.

1. Where to look

The first thing to know is where to look. Bass will move into shallow flats, coves, and protected banks with a firm bottom, often near cover like stumps, rocks, or grass. Clearer water makes it easier to spot them, but even in stained water you can often find signs of spawning activity in just a few feet of depth. Look for circular “beds” that appear lighter than the surrounding bottom, these are nests where bass lay and guard their eggs.

2. Patience and presentation

Once you locate a spawning area, patience and presentation matter most. Bass on the beds aren't feeding out of hunger but reacting to intruders that threaten their nest. The trick is to annoy them into striking. Soft plastics such as lizards, creature baits, or tubes are classics for this situation. Cast past the bed and slowly work the bait into the nest, letting it rest in the strike zone. Repeated casts are often needed before the fish finally lashes out.



3. Read the fish's mood

It's also important to read the fish's mood. A bass locked on a bed may circle back repeatedly, keeping close watch. These fish are more catchable than those just cruising the shallows. If the bass darts away and doesn't return, give it time and try later. Persistence is often rewarded.

4. Practice good fish care

While catching spawning bass is thrilling, responsible anglers practice good fish care. Handle the fish gently with wet hands. Keep it out of the water for the shortest time possible, and release it near the nest so it can return to guard the eggs. This ensures healthy bass populations for future seasons.

Targeting bass during the spawn blends the excitement of sight-fishing with the challenge of triggering strikes from otherwise stubborn fish. By focusing on shallow protected areas, using the right lures and polarised sunglasses, and respecting the resource, anglers can experience one of the most rewarding chapters in the bass fishing calendar.

Don't forget to send your pictures together with a short write up to editor@sabass.com for our Readers-go-Bassing section.

In the next issue we look at How to target bass during the post-spawn period – don't miss it. 🐟





POWERPLUS POWX1310 BISCUIT JOINTER 900W
(YBISCT001)

R1795 incl
vat



MAC AFRIC 25 X 125 MM BELT / DISC SANDER
(WSANDS015)

R1895 incl
vat



MAC AFRIC 6" IN X 9" IN BELT & DISC SANDER
(WSANDS069)

R6495 incl
vat



MAC AFRIC 250 MM TABLE SAW
WITH FOLDING STAND (WSAWLD003)

R4995 incl
vat



MAC AFRIC 250MM BENCH-TYPE TABLE
CIRCULAR SAW (WSAWLD004)

R2995 incl
vat



MAC AFRIC 13" IN (330 MM)
THICKNESSER PLANER (WPLANE300)

R7995 incl
vat



MAC AFRIC 300 MM X 900 MM
WOOD LATHE (WLATHE900)

R8995 incl
vat



MAC AFRIC 1200W SEMI-PROFESSIONAL
BELT SANDER (SSANDB001)

R1795 incl
vat



*BATTERY & CHARGER NOT INCLUDED

KINWAY 20V BRUSHLESS CORDLESS
125MM ROTARY SANDER (ISANDR125)

R395 incl
vat

**NEW
ARRIVAL!**

WHY NOT LEARN FROM ME?

Throughout my literary endeavours I have challenged myself to entertain and humour, provide direction, deliver a message and share a few secrets. I am now challenging you to learn from me, but with a twist.



Bass fishing is mostly a mental game

I am not asking you to increase your knowledge based on what I have done right, but in this case, rather asking you to learn from what I have not done right and in some cases, what I should not have done at all.

Being the proud, optimistic and definitely overconfident bass anglers we are, we generally seem to spend more time and energy lamenting on what we did well, or right or better than the competition... but how many anglers admit the errors they have made or comment on the decisions that actually set them up for failure? Well, the good news is, I am going to put my pride in my pocket for a moment and share some of my historical short-falls and conscious errors, so you can hopefully learn from my mistakes in your quest to conquer your tournaments.

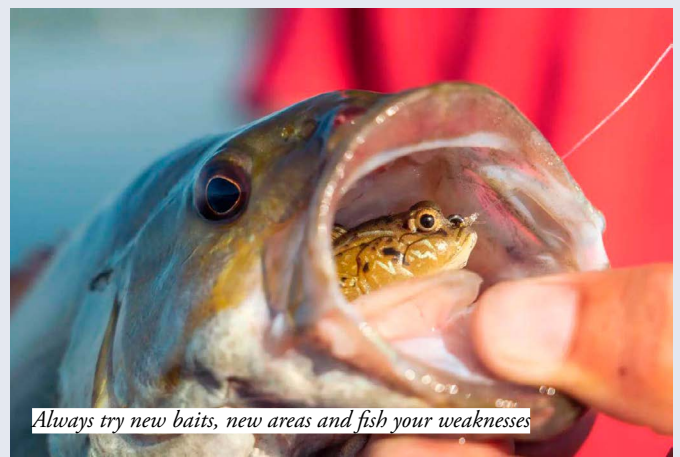
Be intentional on fishing your spots - don't ever be too polite

In South Africa, we face the reality of fishing smaller waters and in the process often compete for the same spots and sometimes come face to face with other anglers in the search for that game changing bite. This means that the odd "stand-off" is not uncommon and my advice is rather than be too polite, let your intentions be known. I am not for one minute suggesting that you become abusive or lose sight of the associated ethics, but rather remember, it is a tournament after all and I am sure you want to win. We were fishing an event at Inanda a few years back and were on a solid bite, had a decent limit and knew we just

needed a kicker fish to pronounce our bag weight. We were fishing a steep bank and were keying in on the few patches of vegetation protruding from the bank with a wacky-rig. Another boat was fishing the same bank as was working towards us. Always erring on the side of what is respectful, I moved the boat away from the bank to allow them past on the inside and held back my cast in the process. The lady angler on the back of the boat made a clumsy yet well positioned cast at the one piece of vegetation I had not had a chance to throw at and reared back on a sizeable fish. After a few laps around the boat and an awkward shriek or two the 3kg fish was netted along with my mood. After mumbling profanities I eventually found it in me to congratulate the lady for catching the fish I thought I was destined to. Lesson learned, where possible, stand your ground and go with your instincts, the nice guy never wins as the saying goes.

Complacency kills innovative fishing

Complacency kills innovation... that is the reality so continuously trusting what has always worked for you could be considered complacent, especially if the technique or tactic is not putting them in the boat at the given time. Reality states that if you are not staying ahead of the fish or the competition, then a more innovative angler is. We obviously rely on trusted techniques and baits but with the ever evolving tackle industry, it is imperative that we stay dynamic and rely on our initiative. Complacency could haunt you for a day, a season or even worse, a lifetime and can often be attributed to over preparing. So here's the inadvertent contradiction... I will always profess to preparation but sometimes, over-preparation can be a killer. Why you ask? Because investing too much of the wrong time into your practice can often narrow your field of vision. You get on a pattern, repeat the pattern throughout the lake and your perception is that you have unlocked the lake and are ready for tournament day. It only then takes one environmental or circumstantial change to blow your game and only the strongest minded and level-headed bass anglers would have allowed for such changes in their pre-fish and conjured up an additional and separate pattern or two. This exact oversight has rendered me useless on many occasions and unable to make the correct and calculated changes on the day to keep up with the field. How many times have you said "but, they were here in practice" or "they chowed this colour last week" and by the time you have hung out in your area or persevered with your top producing bait, the day is about done. So how do you combat this you ask? Always question your strategy, tactic or pattern and pre-empt changing factors as best you can. Always try new baits and new areas and fish your weaknesses, not just your strengths. Don't waste time deciding if your chosen technique is not working, just change it and if your spot is not producing, move on, give it a rest or go and wing it on a new spot. Keep your mind in the game and constantly and consistently motivate change to change your day. Never enter a tournament day with all



Always try new baits, new areas and fish your weaknesses

your confidence instilled in plan A, there must be a plan B as well and even a plan C, and all the plans should allow for on the day dynamic changes. If I could go back to the start of my tournament career with this thinking in mind, the results would have been considerably different... trust me!

Fish against the fish, not the competitors

There are many competitive anglers out there that make it their mission to overshadow age old rivals or top ceding anglers and therefore spend more time worrying about what those anglers are doing rather than what the fish are doing. I too have found myself distracted by this notion in the past and to be honest it never really got me anywhere. On tournament day, your only mission should be to conquer the fish, not the competitors and every ounce of mental and strategic energy should focus on the same. Throughout your day, try and figure out what the fish are doing, not what the opposing anglers are doing. Block out every distraction and keep your eye on the prize, the prize being the five biggest fish you can possibly fit into your live-well.

Bass fishing is mostly a mental game and some of the world's best are not always the best anglers physically, but often the strongest anglers mentally. Think about that for a while... 🐟



The world's best are often the strongest anglers mentally

BASICS FOR BEGINNERS

>> Hannes Lindeque



Spawn

Not all the bass spawn at the same time.



Baits

Curly tail grubs, plastic worms, and lizards are all effective at enticing bass to strike.



Adjust

Bass are sensitive to changes in temperature and atmospheric pressure. Be prepared to adjust your fishing strategy accordingly.

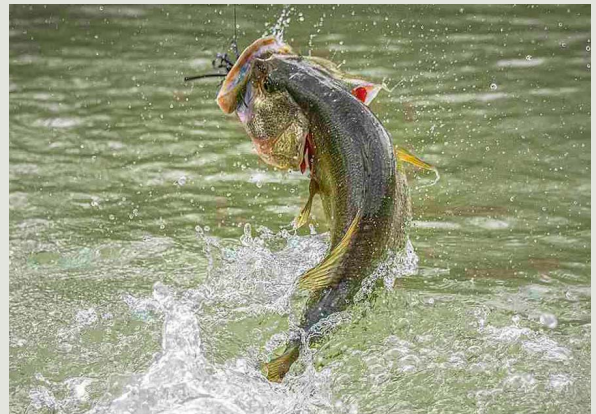
Baitfish

- If baitfish are visibly present, always try and the 'match-the-hatch' in clear water conditions by using a lure that mimics their profile.



Rain

On rainy days, expect heightened activity and aggression, but if you see lightning – put your rods down and get off the water.



Approach

Fish the same spot from different angles.



Hot tip

Always experiment with different lures and learn how to master them.

● EXCITING NEWS!



Cast-for-Cash eAngling Affiliated to Mind Sports South Africa Offers GREAT Opportunities

- ✓ **Cast-for-Cash eAngling National Championship**
- ✓ **MSSA eAngling National Championship**
- ✓ **National Colours**
- ✓ **Protea Colours**
- ✓ **International Tournaments in 2026 in**
- ✓ **USA, Europe, Asia and Africa**

Don't Miss Out - Join Cast-for-Cash
New tournament season starts in August 2025

www.mlfsouthafrica.com

South Africa's Top Competitive Bass Anglers

CALMAN GROBLER (1972)



Bass fishing in South Africa has grown into a fiercely competitive sport, with top anglers constantly pushing the limits of skill, strategy, and innovation. In this exclusive series, we sit down with some of the country's best competitive bass anglers to gain insight into their journeys, techniques, and what it takes to succeed at the highest level.

From tournament-winning strategies to personal stories, gear preferences, and industry insights, these interviews provide a rare glimpse into the minds of the anglers who dominate South Africa's bass fishing scene. Whether you're an aspiring tournament angler, a weekend warrior, or simply a fan of the sport, this series will bring you closer to the action and the people who live for it.

BACKGROUND & PERSONAL JOURNEY

1. What is your occupation?

I work as a sales representative for ETEX South Africa.

2. How did you get started in bass fishing?

I've loved fishing since childhood. My journey into bass fishing began at the small Coro Brick Dam in Nigel, where Gordon Brown introduced me to the thrill of chasing bass - and I was instantly hooked.

3. Who or what inspired you to become a competitive angler?

Initially, I fished purely for the love of it. Then I discovered the Cast-for-Cash tournament trail and realized I could compete while doing what I love. That's when my competitive journey began, and I've enjoyed every tournament since.

4. When did you realize you had what it takes to compete?

In my first year competing as Team Lady Gray, we achieved several strong finishes - often landing in the top five. That was the turning point for me.

5. Can you share a memorable moment from your early fishing days?

There have been many! Competing, and sometimes even winning, against legends like Justy Varkevisser, Justin Booth, Gordon Brown, and Paul Smit was an unforgettable experience. Finishing second overall at the 2020 National Championship also stands out.

COMPETITIVE FISHING & STRATEGY

6. How do you prepare for a big tournament?

Practice time on the water is essential. I closely monitor the weather forecast during the lead-up to the tournament - focusing on wind direction, temperatures, cold fronts, and expected rain. Preparation is everything.

7. What's your go-to strategy for unfamiliar waters?

I fish to my strengths and stick to what I trust. Confidence in your technique is key.

8. Do you have a favourite lure or technique that consistently delivers?

Absolutely. I rely on a Zara Spook, topwater frogs, and a small paddle tail rigged on an underspin.

9. What's the biggest challenge in competitive bass fishing?

Keeping up with the ever-evolving technology. For a large part of my career, I competed without fish finders.

10. How do you handle pressure and competition on the water?

Pressure eases when you've put in the time on the water. Doing your homework beforehand gives you the confidence to stay calm and focused.

TOURNAMENTS & ACHIEVEMENTS

11. How long have you been competing in the SA BASS Cast-for-Cash Tournament Trail?

I've proudly been part of the trail for the past 20 years.

12. What's been your most memorable tournament experience?

Winning the 2024 Cast-for-Cash National Championship at Witbank Dam - one of my favourite venues.

13. What's the toughest competition you've faced?

The 2020 National Championship final at Witbank Dam was especially challenging.

14. Have you ever experienced a major setback in a tournament? How did you overcome it?

Yes. During the final at De Hoop Dam, my outboard motor failed on day one. We had to fish the entire three-day event using only the trolling motor - but we pushed through.

15. What's your proudest fishing accomplishment?

Winning the 2024 final tops the list.

GEAR & TECHNOLOGY

16. What's your must-have piece of gear?

Definitely my trolling motor - it's indispensable.

17. How important is technology in modern bass fishing?

Technology can give you an edge, especially on certain dams. That said, we won the 2024 final without using any fish finders.

18. Do you have any sponsorships, and how have they influenced your career?

In our early days, Escape Boating supported us, which made it easier to participate in tournaments. These days, I self-fund and continue chasing my dreams.

INDUSTRY INSIGHTS & ADVICE

19. What's something most people don't realise about competitive bass fishing?

The significant time and money invested in this sport - it's not just a hobby, it's a serious commitment.

20. What advice would you give someone who wants to start competing?

Go for it! The friendships and community you build are just as rewarding as the fishing.

21. How do you see the sport evolving in the next five to ten years?

There's tremendous growth potential. If we unite as a community, we can take bass fishing in South Africa to new heights.

22. What's your view on conservation and sustainable fishing?

We need to change some of our habits to preserve our fisheries for future generations.

FUN & PERSONAL TOUCH

23. What's your personal best bass, and where did you catch it?

A 4.8kg bass caught at Nigel Dam.

24. If you could fish with any angler, past or present, who would it be?

Frans Swanepoel, who sadly passed away during the COVID-19 pandemic.

25. Do you have any superstitions or pre-tournament rituals?

A good cup of coffee is a must before launch.

26. What do you enjoy doing when you're not fishing?

Fishing with my wife - it's something we love sharing together.

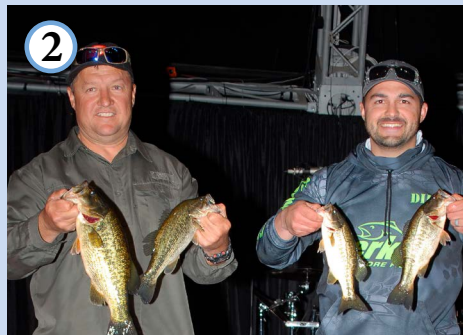
27. What's a funny or crazy moment you've experienced while fishing?

At Mokolo Dam, I tried to prank Jako Labuschagne by casting my lure at a small crocodile near the boat. The lure vanished, and my line started moving. Thinking I hooked the croc, I yelled, "I've got a big one!" Jako rushed to net it - only to find a 2kg bass that had been hiding under the crocodile! We were both stunned... and relieved!

Stay tuned as we uncover the passion, dedication, and secrets behind South Africa's elite bass anglers. In the next issue we speak to another top angler. 🎣



Dirk Smith & Calman Grobler, FLW RSA National Championship, Vaal River, 2017



1. Darryn Pachonick & Calman Grobler won the Cast-for-Cash National Championship, Witbank Dam, 2024
2. Calman Grobler & Dirk Smith, FLW RSA National Championship, Witbank Dam, 2019
3. Calman weighed the heaviest fish during the championship in 2024



TOERNOOIHENGEL

HOE HOU ONS DIE BAARS LEWEND

Nadat ek onlangs meer betrokke begin raak het by baarshengeltoernooie, was dit vir my opvallend hoeveel baars vrek nadat hulle geweeg en weer vrygelaat word. Ongelukkig is daar ook kompeterende hengelaars wat nie genoegsaam omgee en ag slaan op die beskerming van baars nie. Dit bly ook 'n omstrede besprekingspunt in hengelkringe.

>> *Philip Kemp**



Gooi sponse in jou live-well. Dit gee die vis 'n plek om onder weg te kruip en beskerm hom teen die harde wande

Die top-10 toernooi visversorgings wenke

#1. Beskerm die slymlaag

Moenie baars deur die lug swaai of “boat-flip” nie. Hou hulle van die boot se mat af. Gryp die vis aan die onderste kakebeen of lig hulle met die lyn op voordat hulle op die dek van die boot land. Probeer ook om die baars nie met droë hande te hanteer nie. Groot baars behoort nie net aan hulle onderkaak opgetel te word nie, maar eerder ook onder die pens ondersteun te word.

#2. Gebruik die regte skepnet

Gebruik 'n rubber-ofviniel-bedekte, sagte maaslandingsnet indien toegelaat en nie die harde geknoopte, nylon nette nie. Maak ook seker dat die bek van jou landingsnet groot genoeg is om 'n groot baars te land.

#3. Beperk lugblootstelling

Land die vis en verwyder die hoeke so vinnig as moontlik. Hanteer die baars so min moontlik en plaas die vis so gou moontlik in die leefdam (live-well).

#4. Hantering

Swartbaars swaarder as 2.3kg (5 pond) behoort met twee hande vasgehou word. Ondersteun die vis onder die anale vin. Groot baars behoort nie aan hulle onderkaak alleen opgetel te word nie, maar moet eerder ook onder die pens ondersteun word.

#5. Merkers

Gebruik nie-deurdringende merkklampe wat sluit, maar nie styf op die baars se bek vasknyp nie.

#6. Leefdamme

Indien jou boot twee leefdamme (live-wells) het, hou albei vol water en verdeel jou vang. Meer water beteken meer suurstof per vis.

#7. Ventilاسie

Installeer ventilasietoestelle op leefdamdeksels om hitte wat opbou te verminder en vars lug toe te laat.

#8. Leefdamwerking

Die handhawing van voldoende suurstof in die water en watertemperatuurbeheer is krities belangrik. Voeg een koppie nie-gejodeerde sout per 56 liter leefdamwater by wanneer jy die water hersirkuleer. Monitor die watertemperatuur met 'n drywende termometer.

Indien die watertemperature onder 18°C is; pomp vars water in met gereelde tussenposes om die leefdam te verfris. Vul leefdamme vroeg in die dag, moenie warm oppervlakwater later in die dag in pomp nie.

Indien die watertemperatuur tussen 18 en 24°C is; pomp vars water en vars lug aanhoudend in. Probeer om nie warm oppervlakwater in te pomp nie.

Let wel: Wanneer die watertemperature bokant 24°C styg, is dit raadsaam om 'n bottel gevriesde water in die leefdam te sit om die watertemperature koeler te hou. Gewoonlik neem dit 3 tot 4kg ys om 'n 90 liter leefdam 5.5°C te laat afkoel. (Moet nie ys ingooi nie – ys bevat chemikalië soos chloor wat nadelig is vir die vis – Red.)

#9. Noodbehandeling

Ontgas (fizz) vis onmiddellik wanneer hulle tekens toon van 'n ooropgeblaasde lugblaas. Kyk gereeld. Gewigte aan vinne genees nie druk-trauma nie – die vis moet ontgas word om skade te voorkom. (Sien ons volledige artikel in die Julie-uitgawe “How to... deflate a deep caught bass” – Red.)

#10. Inweegsak

Vul die weegsak met minstens twee liter leefdamwater en nie met warm water teen die oewer nie.

Heelwat van hierdie basiese reëls vir die beskerming van hierdie besondere vis word ongelukkig nie altyd toegepas nie. Kompetisie-organiseerders moet egter seker maak dat die nodige reëls oor vishantering aan oningeligde hengelaars oorgedra word. 🐟



Daar is verskeie produkte op die mark wat in die live-well gegooi kan word om die baars gesond te hou



Plaas 'n bottel gevriesde water in die live-well (leefdam) i.p.v. ys



Gebruik 'n sagte, rubber-skepnet



Gebruik 'n #18 naald om 'n vis mee te ontgas



Hou die live-well (leefdam) se temperatuur dop, veral op warm dae

QUIZ

FIND THE WORD

THERE ARE 16 DIFFERENT NAMES HIDDEN IN THIS PUZZLE, SEE IF YOU CAN FIND AND ENCIRCLE ALL OF THEM.

- Barometer
- Bridges
- Clearwater
- Curlytail
- Dyeing
- Flooded
- Hookset
- Largemouth
- Loop-knot
- Overcast
- Poppers
- Retrieve
- Shaking
- Spawn
- Submerged
- Thermometer

J	K	L	M	N	O	P	Q	R	R	T	U	V	W	X	E
A	B	C	D	S	U	B	M	E	R	G	E	D	N	V	P
D	E	C	U	R	L	Y	T	A	I	L	O	P	E	R	S
F	G	H	I	S	H	A	K	I	N	G	Q	I	S	P	U
B	C	D	E	F	W	H	I	J	K	L	R	N	O	O	Q
S	P	A	W	N	J	B	L	M	N	T	P	H	R	P	T
C	D	E	A	O	H	I	A	K	E	M	T	O	P	P	R
H	F	E	K	L	V	N	O	R	Q	U	S	T	U	E	W
T	L	V	W	T	H	E	R	M	O	M	E	T	E	R	O
C	O	U	V	W	X	Y	R	M	H	M	J	K	L	S	N
H	O	O	K	S	E	T	E	C	I	J	E	L	M	N	O
Z	D	Y	E	I	N	G	G	H	A	P	Q	T	S	T	U
V	E	X	Y	B	R	I	D	G	E	S	M	N	E	P	Q
W	D	Y	Z	A	B	C	D	E	L	M	T	O	P	R	R
O	P	Q	L	O	O	P	K	N	O	T	X	Y	Z	A	B
Y	Z	A	B	C	D	E	F	G	N	O	P	Q	R	S	T



Ensure that the trailer complies with all SABS standards, especially the new SABS yellow reflective tape requirements.

FISHING 101: SPINNERBAIT SECRETS

Why So Many Options?

Walk down any tackle aisle and you'll see them, rows of spinnerbaits in every size, colour, and blade style you can imagine. At first glance, it might seem overwhelming. Why do we need so many variations of the same lure? The truth is, each design tweak helps you catch bass in different conditions. Spinnerbaits aren't a one-size-fits-all lure, they're a tool built for versatility.

SKIRT COLOURS: MATCHING THE MOOD

The skirt of a spinnerbait is more than decoration, it's the lure's main body and profile. Bright colours like chartreuse or white are go-to choices in stained water because they're easy for bass to see. Natural shades, like shad or green pumpkin, shine in clear water where fish get a good look before committing. And when you're fishing at night or in low light, darker skirts like black or purple create a strong silhouette bass can track.

BLADE COLOURS AND SHAPES: FLASH VS. VIBRATION

Blades are what make spinnerbaits unique, and they're the first thing bass notice.

- **Colorado blades** are round and thump hard, perfect for muddy water where vibration matters more than sight.
- **Willow leaf blades** are long and slim, throwing off a ton of flash and running deeper, making them deadly in clear water or when baitfish are present.
- **Indiana blades** sit somewhere in between, giving you a balance of flash and vibration.

Blade colour also plays a role. Nickel or silver blades imitate shad, gold works well in stained water, and painted blades add an extra punch of visibility.

WEIGHTS: DEPTH CONTROL

Spinnerbaits come in a range of weights for one simple reason - depth.

A light ¼-ounce bait stays high in the water column, making it perfect for shallow cover or slow-rolling along the surface. A heavy ¾-ounce bait sinks fast and lets you fish deeper ledges or windy points without losing control. Choosing the right weight keeps your lure in the strike zone longer.

SIZES: MATCHING THE FORAGE

Bass are opportunistic, but they're also picky about what looks "right." Smaller spinnerbaits mimic young-of-the-year baitfish and are great when fish are feeding on small forage. Larger profiles work better when bass are after tilapia, carp or even their own kind. Matching the size of your spinnerbait to what bass are eating can be the difference between a follow and a strike.

THE BIG PICTURE

So why do spinnerbaits come in so many different colours, blades, weights, and sizes? Because conditions are always changing. Water clarity, forage type, season, and even time of day all influence how bass feed. Having options in your tackle box means you can adapt on the water instead of hoping one "standard" spinnerbait fits every situation.

PRO TIP

Build a small collection with variety; one light and one heavy spinnerbait, a mix of blade styles, and a handful of skirts in natural, bright, and dark colours. With those basics, you'll be ready for just about anything the lake throws your way. 🐟



Spinnerbaits are built for versatility

MK FISHING ACADEMY



Maurice Kemp, die skrywer, Skippie Scheepers en een van die motorwagte by Rhenosterkopdam

Toe Maurice Kemp 'n jaar gelede met die idee vorendag gekom het om baarshengel vir meer hengelaars toeganklik te maak, sou hy nie in sy wildste drome kon dink dat MK Fishing Academy so vinnig sou groei nie.

>> **Philip Kemp***

Baarshengel in Suid-Afrika groei, nie net in gewildheid nie, maar ook in kwaliteit, tegniek en gemeenskapsbetrokkenheid. Een van die voorlopers van daardie groei is MK Fishing Academy. Vir hengelaars wat graag wil verbeter, meer wil leer, groei en kennis verryk, is hierdie akademies net die regte plek om te wees. En natuurlik is persoonlike bestes ook nie vêrgesog nie.

Wat doen MK Fishing Academy presies?

MK Fishing Academy bied 'n kombinasie van opleiding, begeleide hengeluitstappies en mentorskap. Sommige van die dinge wat gereeld op hul Facebook-blad verskyn, sluit in:

- Begeleide visvang in privaatdamme: Maurice neem hengelaars na damme waartoe hy toegang het, wat nie altyd maklik is om andersins te hengel nie.
- Praktiese lesse oor taktiek en kunsasgebruik, hoe om kunsas te kies, watter stroppe om te gebruik, hoe om struikelblokke te identifiseer en visse te lok in verskillende kondisies en omstandighede. Die kennis wat Maurice deel is van onskatbare waarde en studente verwys met groot lof na die hengel-akademie. So word persoonlike oorwinnings en prestasies gedeel. Studente vier hul eerste groot vangste (byvoorbeeld vang van 2kg+), of hulle eerste "trofee"-vangs, en dié oomblikke word gedeel in

foto's en videos op verskeie sosiale platforms.

Behalwe privaatdamme kan hengelaars ook 'n dag op 'n baarsboot saam met Maurice bespreek. Die kans om so 'n trofeevis te vang is natuurlik groter en hengelaars vang weekliks hulle nuwe persoonlike bestes.

Wat kliente sê!

Die terugvoering is oorwegend baie positief. Studente noem dat die ervaring by MK Fishing Academy hulle nie net geleer het om beter vis te vang nie, maar ook om meer oor die damme, waters en kunsaskeuses te verstaan: "Hulle het my geneem na privaatdamme ... die kennis wat Maurice Kemp gedeel het was die moeite werd."

Waarom speel MK Fishing Academy so 'n belangrike rol?

Daar is 'n paar redes hoekom MK Fishing Academy 'n belangrike rol speel in ons plaaslike hengelgemeenskap:

1. Toeganklikheid tot kennis en damme – baie hengelaars sien privaatdamme as "buite bereik". Maurice neem mense daarheen; hy gee insig oor hoe om daardie waters te lees.
2. Verbetering van tegnieke – mens leer nie net "gooi die aas en wag nie". Jy leer situasies lees, rigging gebruik, tydelike toestande oorbrug – dinge wat die verskil kan



Die gesigte vertel 'n storie. Hengelaars het hul tyd terdeë geniet

maak tussen niks en 'n groot vang.– wanneer 'n kliënt sy eerste groot baars vang, of 'n PB breek, motiveer dit ander. MK Fishing Academy help dus nie net hengelaars nie, maar bou 'n kultuur rondom trots, prestasie en respek vir die natuur.

3. Waardering vir die natuur en omgewingsbewustheid. Hoe meer mense leer om volhoubare hengeltegnieke toe te pas, hoe beter is dit vir die damme self (minder verlies van vis, beter hantering van baars, bewuswording rondom die bewaring en bestuur van die natuur en damme).

MK Fishing Academy se duidelike doel is om baarshengel te ontwikkel en oor te dra vir die nageslag, ons kinders. Die akademie het die afgelope jaar geweldige groei getoon met meer studente, meer uitstappies, en groter prestasies. Buiten dat studente hul vangste begin deel, sien mens ook dat die waardering in die baarsvanggemeenskap groei – nie net in kommentaar nie, maar in respek en belangstelling.

Slotgedagte

MK Fishing Academy is nie net 'n hengelskool nie; dit is 'n platform vir groei – vir hengelaars, vir gemeenskap, en vir die sport van baarshengel in Suid-Afrika. Maurice Kemp se visie, hard werk en bereidwilligheid om kennis te deel, maak dat meer mense nie net vis vang nie, maar ook leer verstaan wat dit beteken om 'n goeie hengelaar te wees.

Vir elke jong of meer ervare hengelaar wat meer wil leer, MK Fishing Academy is beslis 'n naam om te onthou, 'n geleentheid om te benut, en 'n pad na groter vangste.

Meer omtrent Maurice Kemp

Maurice het reeds as jong sesjarige by sy pa en ma die passie vir die sport aangeleer – “ek het grootgeword met 'n visstok in die hand,” soos hy op sy Facebook-blad sê. Hy het 'n passie vir baarshengel, en sy doel is om dié passie te deel deur opleiding, geleenthede en toegang tot damme en tegnieke wat gewoonlik nie vir almal beskikbaar is nie. MK Fishing Academy is sy manier om die sport na 'n hoër vlak te bring – nie net vir homself nie, maar vir ander hengelaars wat graag wil leer. 🐟

**Philip Kemp is 'n gesoute swartbaarshengelaar en assistent-redakteur van SA BASS.*



Hengelaars word mooi baars gewaarborg



Selfs die dames vang hulle nuwe PB's.

Booyah Flash Point

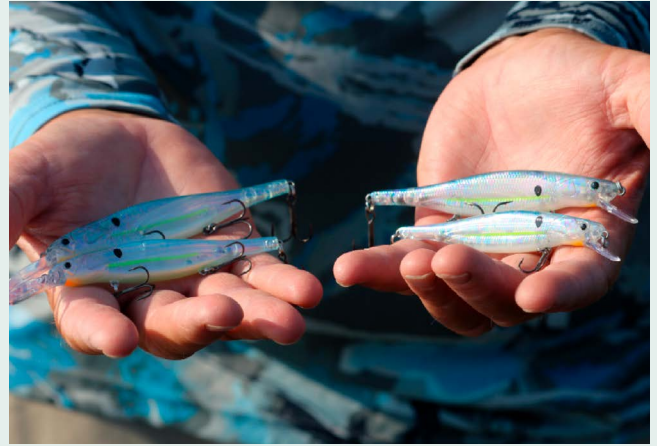
BOOYAH Bait Company, which redefined jerkbait fishing when it launched the innovative Flash Point Jerkbait, is building the Flash Point arsenal to fulfil angler needs with the release of smaller versions of the Flash Point and Flash Point Deep.

The Flash Point Junior and Flash Point Junior Deep are ¼-inch smaller than the original versions.

Downsizing helps match diminutive forage and adds appeal to fish turned fussy by weather, water conditions or added fishing pressure. Having shallow and deep versions in the smaller size equips anglers for a vast range of situations.

Both new models feature the Flash Point's custom, embedded blade, which creates strike-triggering flash and provides an unparalleled return on forward facing sonar. The new Flash Point Junior and Flash Point Junior Deep also boast the narrow profile, broader rounded back and belly, etched scales and fins that characterize Flash Point Jerkbait, along with a nose-down suspending posture, irresistible action and tungsten-weight casting system.

The Flash Point Junior and Flash Point Junior Deep are four inches long and weigh 3/8-ounce and come equipped with three ultra-sharp, carbon steel, SS finish #8 trebles and come in the same twelve outstanding and highly popular colours as the original Flash Point.



First-Ever-Fishing

B.A.S.S. is casting a wider net than ever before with the launch of the Bassmaster Channel, the first-ever Free Ad-Supported Streaming Television (FAST) channel dedicated exclusively to

the sport of fishing. This groundbreaking digital network will bring Bassmaster's world-class content to a massive new streaming audience - 24 hours a day, 7 days a week.

The Bassmaster Channel will deliver an unmatched line-up of programming, including event coverage from the Progressive Bassmaster Elite Series, Bass Pro Shops Bassmaster Classic presented by Under Armour, Bassmaster Elite Qualifier Series, St. Croix Bassmaster Opens presented by SEVIIN and much more. Original content, archived footage of iconic moments, angler features, educational how-to's and lifestyle programming will round out the line-up, giving fans a front-row seat to the most celebrated moments and stories in bass fishing history along with world-class coverage of the latest fishing industry developments.

"Launching a FAST channel is a major milestone not only for B.A.S.S., but for the sport as a whole," said Phillip Johnson, Chief Operating Officer of B.A.S.S. "The Bassmaster brand has always been about educating, inspiring and bringing fans closer to the action, and now we're making that easier than ever. By streaming on Roku, we're delivering Bassmaster content to millions of living rooms, mobile devices and smart TVs - reaching new fans while giving lifelong anglers a place to stay connected to the sport they love, anytime and anywhere."

FAST channels represent one of the fastest-growing



BASSMASTER

CHANNEL

segments of digital media, and Roku's expansive user base offers B.A.S.S. unprecedented access to a broader unreached audience. With the sport growing at all levels, from youth competition to the

Elite Series, the Bassmaster Channel will serve as a powerful platform to introduce new viewers to competitive bass fishing and deepen engagement among longtime fans.

"Our partnership with Bassmaster is off to a fantastic start, and we're excited to further expand their offering on The Roku Channel," said Joe Franzetta, Head of Sports, Roku Media. "Our audience has demonstrated a strong appetite for Bassmaster tournaments, which makes us even more thrilled to give viewers additional opportunities to enjoy the best of professional fishing as the launch partner for Bassmaster's first FAST channel."

This new offering is part of a broader digital content strategy at B.A.S.S., which includes expanded live event coverage, more on-demand video, and deeper integration with sponsors, anglers and fans. The Bassmaster FAST Channel will also serve as a platform to showcase fresh, creative bass fishing content alongside extended coverage of the sport's most popular events. With live coverage already airing on FOX, FS1 and Bassmaster.com - along with a strong presence across social media - the FAST Channel completes the powerhouse media package delivered by B.A.S.S.

To watch the Bassmaster Channel simply search "Bassmaster" on your Roku device or Roku TV and add the free channel.

Yamamoto 4” Fat Shad

There is no such thing as too much of a good thing. That’s why Yamamoto Baits has beefed up the Shad Shape Worm. Still featuring the same proven design, the all-new 4” Fat Shad Shape Worm provides a fatter body construction that makes it perfect for dropshotting or as a jig head minnow.

“The Fat Shad Shape Worm is all about a bigger profile,” explains Yamamoto pro Brent Ehrler “Whenever I feel like I want a bigger profile bait to match the hatch, whether it’s for dropshotting or on a jig head minnow, this bait simply gets the job done. Same design, same success, just bigger.”

Coming 8 per pack, the 4” Fat Shad Shape Worm is available in 12 awesome Yamamoto colors. Get yours today at Baits.com or your favorite fishing retailer.

Stay up to date with all the new baits and brand announcements on Facebook as well as other Yamamoto social media platforms.



Garmin named 2025 Manufacturer Of The Year

Garmin extends its winning streak, now recognized with 72 prestigious NMEA honours for excellence across marine product, service and support categories.

Garmin, the world’s most innovative and recognized marine electronics manufacturer, has been named Manufacturer of the Year in the large manufacturer category for the 11th consecutive year by members of the National Marine Electronics Association (NMEA®) at its annual conference and awards banquet held September in West Palm Beach, Fla. The coveted Manufacturer of the Year title is awarded to the most recognized company in the marine electronics industry for excellence in product service and support in the field.

Garmin was also awarded eight Product of Excellence awards in the multi-function display (MFD), fishfinder, autopilot, multimedia entertainment, automatic identification system (AIS), marine safety device, satellite communication antenna and marine specialty product categories. These awards are voted on by NMEA dealers who specialize in installing marine electronics, qualified NMEA technicians and other marine electronics manufacturers.

“It’s a tremendous honour to be recognized by the NMEA as Manufacturer of the Year for 11 years running and to extend our product of excellence awards across so many categories. This recognition reflects the dedication of our entire team to delivering innovative marine technology, exceptional service and unwavering support to our customers. Garmin’s momentum in the marine industry shows no signs of slowing and we look forward to continuing to work alongside the NMEA to shape the future of marine technology.” –Dave Dunn, Garmin Senior Director of Marine & RV Sales

This year’s NMEA Product of Excellence honours for Garmin include:

- GPSMAP® 9227 touchscreen chartplotter
- GSD™ 28 fishfinder

- Reactor™ 40 Hydraulic Autopilot with SmartPump v2
- Fusion® Apollo™ RA770 Marine Stereo
- Cortex® M1 Hub
- inReach® Mini 2 Marine Bundle
- inReach Messenger Plus Satellite Communication Antenna
- quatix® 8 Marine GPS Smartwatch

“These awards showcase the very best in marine electronics technology. Every year, our members and certified installers select products that they trust and rely on to deliver performance, safety, and innovation on the water.” – Mark Reedenaue, NMEA President and Executive Director

Engineered on the inside for life on the outside, Garmin products have revolutionized life for anglers, sailors, mariners and boat enthusiasts everywhere. Committed to developing the most innovative, highest quality, and easiest to use marine electronics the industry has ever known, Garmin believes every day is an opportunity to innovate and a chance to beat yesterday.

For more information, visit Garmin’s virtual Newsroom, email our press team, connect with @garminmarine on social media, or follow our blog.



South Africa

Dam Levels



Here is a list of the latest water levels of some of South Africa's biggest water reservoirs.

Eastern Cape	71.1%	↑↓
Beervlei Dam	0.0%	0.0%
Bridle Drift Dam	95.7%	-3.3%
Darlington Dam	39.8%	0.1%
Impofu Dam	49.0%	-1.1%
Wriggleswade Dam	100.0%	0.0%

Gauteng	100.6%	↑↓
Bronkhorstspuit	100.8%	-1.0%
Roodeplaat Dam	100.4%	0.0%

Kwa-Zulu Natal	94.6%	↑↓
Albert Falls Dam	95.3%	-3.5%
Bivane Dam	95.3%	-5.3%
Goedertrouw Dam	95.6%	-2.2%
Inanda Dam	99.3%	-1.7%
Midmar Dam	94.7%	-2.8%
Ntshingwayo Dam	91.9%	-2.4%
Pongolapoort Dam	94.0%	-1.3%
Spioenkop Dam	93.9%	-5.4%
Spring Grove Dam	82.9%	-6.7%
Wagendrift Dam	97.3%	-1.6%
Woodstock Dam	97.3%	0.6%
Zaaihoek Dam	97.3%	-3.2%

Limpopo	83.8%	↑↓
Albasini Dam	96.4%	-1.4%
De Hoop Dam	99.7%	-0.6%
Ebenezer Dam	97.8%	-2.2%
Flag Boshielo / Arabie	99.3%	-2.2%
Doorndraai Dam	99.9%	-0.5%
Mokolo Dam	23.9%	-4.5%
Nandoni Dam	90.5%	-3.8%
Rust de Winter Dam	100.3%	-0.8%
Tzaneen Dam	46.1%	-7.6%

Mpumalanga	95.2%	↑↓
Da Gama Dam	89.6%	-5.9%
Driekoppies Dam	88.8%	-2.9%
Grootdraai Dam	96.6%	-2.0%
Heyshope Dam	99.7%	-0.5%
Injaka Dam	94.2%	-2.6%
Jericho Dam	91.2%	-4.0%
Kwena Dam	90.2%	-9.1%
Loskop Dam	99.5%	-1.6%
Middelburg Dam	92.6%	-2.0%
Morgenstond Dam	100.3%	0.2%
Nooitgedacht Dam	95.3%	-5.0%
Rhenosterkop Dam	98.2%	-2.7%
Vygeboom Dam	98.6%	-1.8%
Witbank Dam	98.6%	-2.9%

North West	99.6%	↑↓
Boskop Dam	101.7%	-1.0%
Buffelspoort Dam	100.4%	-0.1%
Hartebeespoort Dam	93.5%	-6.9%
Klerkskraal Dam	100.7%	-7.1%
Kosterrivier Dam	100.2%	-0.4%
Molatedi Dam	104.4%	-3.3%
Roodekopjes Dam	96.3%	-8.5%

O.F.S.	99.7%	↑↓
Allemanskraal Dam	96.0%	-3.1%
Bloemhof Dam	101.2%	-7.2%
Gariiep Dam	96.3%	-2.6%
Kalkfontein Dam	99.0%	-1.4%
Knellpoort Dam	99.5%	-0.4%
Koppies Dam	97.1%	-3.9%
Sterkfontein Dam	99.0%	-0.1%
Vaal Dam	105.0%	-2.3%
Vaalrivier Barrage	105.0%	7.7%
Vanderkloof Dam	98.4%	-0.9%

Western Cape	88.7%	↑↓
Berg River Dam	99.6%	-2.0%
Brandvlei Dam	77.6%	4.4%
Clanwilliam Dam	92.4%	15.2%
Kwaggaskloof Dam	76.1%	4.4%
Theewaterskloof Dam	85.8%	1.5%
Voëlvlei Dam	100.9%	9.6%

Levels on: 16-Sep 11-Aug
Average: 91.9% 93.6%



For all anglers who are mad about bassin'
and mad about FUN.

CASH prizes to be won

One day bass angling tournament;
First weekend of the month;
Open to anybody – no need to belong to a club;
Register on the day at the venue;
Entry fee: R300/angler;
Buddy tournament – fish with your friend, family member, or alone;
Fishing is from small watercraft (less than 4.6m in length) - No outboards allowed;
Limit is 3 fish per team;
Big cash prizes + trophies to be won;
Lucky draw prizes

**New season starts
September 2025**



Call 082-416-5524, or get all the rules, dates and venues on our website

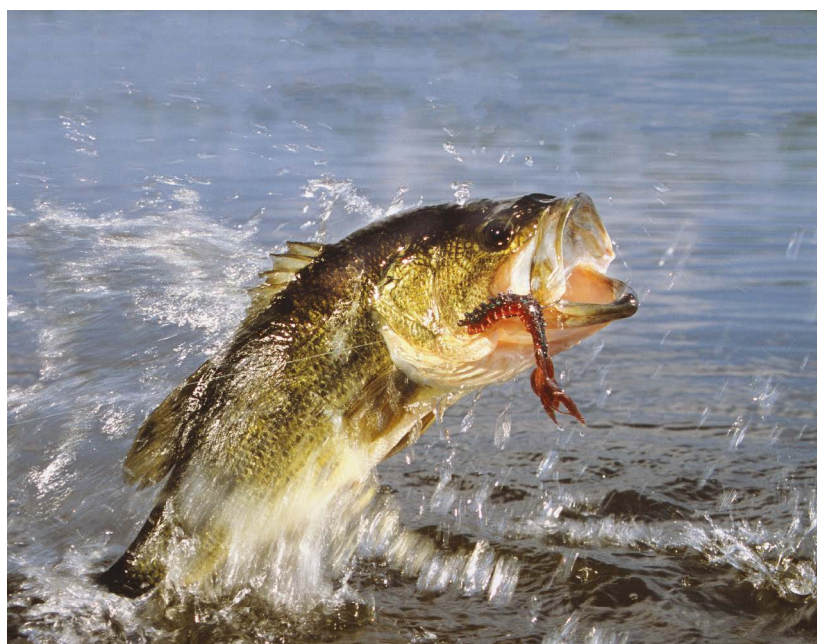


WORLD'S LARGEST TOURNAMENT
FISHING ORGANIZATION
www.mfssouthafrica.com





**SOMEDAY YOU'LL TELL
YOUR LIFE STORY.
ONE FISH AT A TIME.**



Mercury 250 and 300hp Pro XS

Your best stories begin out here. Where the only thing on the line is what you can catch. And every cast is another chance to fill your memories with the fish of a lifetime.

**MERCURY ENGINES ARE MADE FOR EXPLORING.
SO ARE YOU. GO BOLDLY.**



MERCURY
GO BOLDLY.®

Rutherford

Marine

Exclusive Distributor of Mercury and MerCruiser

EXPLORE THE LINEUP AT RUTHERFORDMARINE.CO.ZA